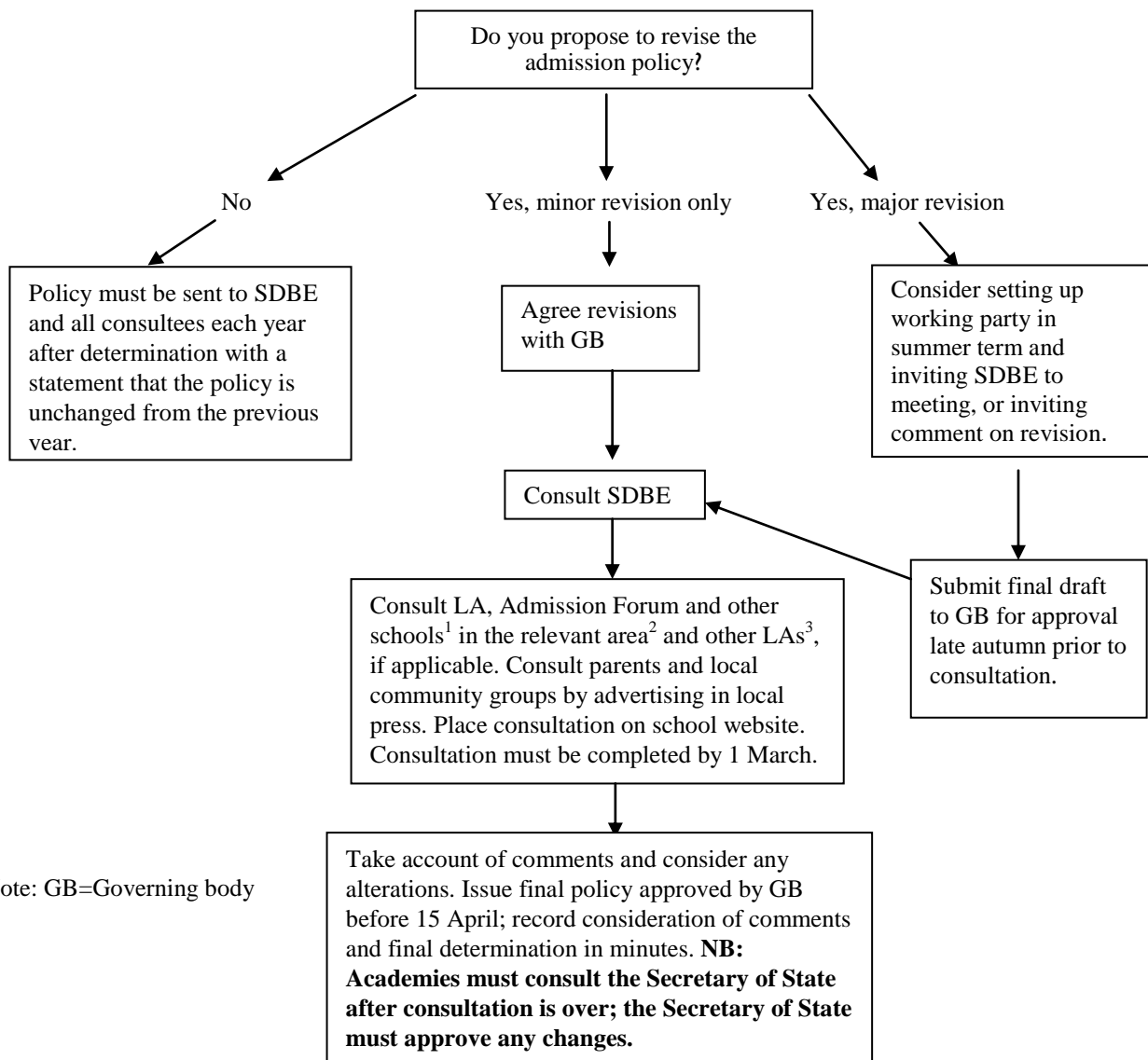


## Admissions Consultation Process Flowchart



### Notes to flowchart:

- 1 Primary schools must consult all other primary schools in the relevant area; secondary schools must consult all primary and secondary schools in the relevant area.
- 2 Governing bodies should check with the LA for the definition of relevant area.
- 3 Schools need only consult neighbouring LAs if the border is within 2 miles of a primary school or within five miles of a secondary school.

