



**Diocese
of Salisbury**
Making
Jesus Known

Profile

For the position of
Team Vicar
in the Clarendon Team Ministry
2025

Our Prayer

Father God,
draw to us a new team vicar,
who will help us to build your kingdom here.
Prepare our hearts to work with them,
in the service of your Son, Jesus Christ, our Saviour.
Amen

Contents

Contents.....	2
Welcome.....	3
Bishop's Introduction	4
Introduction to the Clarendon Team	5
The Parishes	6
The Parish of Alderbury.....	6
The Parish of West Dean with East Grimstead.....	10
The Parish of West Grimstead	13
Other Parishes in the Clarendon Team.....	14
Whiteparish.....	14
Winterslow	15
Farley with Pitton	15
Meet the Ministry Team	17
What We are Offering	19
Role Description.....	19
Person Specification	20
The Rectory	21
Appendix Information	23
The Diocese of Salisbury	23
Map of the Clarendon Team Parishes, Churches and Features	24
The Alderbury Deanery	25
Population, Electoral Roll & Worship Community.....	27
Funerals.....	27
Weddings	28
Baptisms.....	28
Pre Vacancy Sunday Service Pattern.....	29
Financial Overview	30
Brief History of the Clarendon Team and Team Council.....	31



Bishop's Introduction



Welcome!

Thank you for your interest in the post of Team Vicar in the Clarendon Team. This is a super opportunity to serve in one of the most attractive parts of Wiltshire, close to our cathedral city of Salisbury.

I am looking for devoted and visionary clergy, who can inspire and lead our churches in Making Jesus known – our Diocesan vision. While this can appear a timeless landscape, our parishes are constantly changing and face all the challenges and opportunities of life in 2025. Because of this, the church must renew its mission and traditions for the contemporary situation.

In the Diocese of Salisbury, we place a high value on the encouragement and pastoral support of our parish clergy and, should God guide you to serve here, you will become part of a committed and collaborative team.

Please contact the Ramsbury office if you need any assistance with your enquiry and be assured of my prayers as you seek the Lord's will for your future.

Sincerely in Christ,

A handwritten signature in black ink that reads "Andrew Ramsbury". The signature is written in a cursive, flowing style.

Introduction to the Clarendon Team

The nine Clarendon Churches are situated in the rural villages to the East of Salisbury. One of the joys of living here is that we have all the benefits of close village communities with their own personalities as well as all the facilities of the City of Salisbury only ten minutes away.

Our churches are geographically divided into three pastoral areas (map in appendix) and you, as Team Vicar living in Alderbury, will have responsibility to serve, shepherd, inspire worship and 'walk with' the people of the parishes of Alderbury, West Dean with East Grimstead and West Grimstead.

The four villages for which you will be responsible are different. Alderbury being the largest and the other three being small village communities. Alderbury (where you will live) is a medium sized village of around 1,000 houses. It has a two shops, one with Post Office, Primary School, Pub and Social Club. Although the church building is in the older part of the village, the church is very active within the community running a weekly coffee shop, monthly Café style church in the Village Hall and outreach to young and old within the village.

West Grimstead is a friendly village, with a good mix of housing types, long-term residents and newcomers. The church congregation is small and self-reliant, but they are very welcoming to all who come to church, even if very seldom. They love singing hymns!

West Dean offers opportunities to engage in a friendly village with a strong community spirit. They say "we would like our Vicar to support us in making the Christian faith more part of village life." East Grimstead, although a separate village with its own identity, is within the same church parish as West Dean. It is a welcoming village with an active social life. Holy Trinity East Grimstead has this year actively renewed connections between church and community.

The ministry team consists of: Simon, the Team Rector who has pastoral responsibility for Winterslow and Farley with Pitton in the north; Jane, SSM Team Vicar, with responsibility for Whiteparish in the South, and you, based in Alderbury. We have three LLMs and we meet weekly to plan, pray, exchange news and to share what we are going through. We are supported by an experienced team administrator and assistant (both paid roles) who deal with many administrative tasks, including wedding/funeral/baptism admin, finance, printing amongst others. Our administrators are there to relieve the ministry team from such admin, which they do well, and have done so for many years.

The Clarendon Churches have operated in different ways over the last decade or so. Currently, we think our way of working, which gives each village/church their own 'vicar', works best for us as clergy and for our parishes. To gain a depth to our ministry and an understanding of each other's churches and communities we also take services in each other's churches,. This richness and breadth of ministry enables each of our churches to keep their own identities, while benefiting from being part of a larger group. It makes ministry in the Clarendon Team rewarding, and we look forward to you bringing your own gifts and experience. We also look forward to sharing food, friendship and laughter as we serve God and our communities.

If you would like an informal chat, don't hesitate to contact me on 01980 862231
Rev'd Simon Chambers – Team Rector

The Parishes

The Parish of Alderbury



The Church and Congregation

Rebuilt in 1857 on the site of the medieval church, the church of St Mary's Alderbury is a lively, friendly church. A previous incumbent has said *"The spirit of St. Mary's is one of welcoming in and reaching out in service and Christian witness to the community. Rooted in prayer, Bible study and fellowship, the congregation is faithful and open to growth."*

There are 69 people on the electoral roll and since 2021 our worshipping community has risen to 63 Adults and 6 Children with average Sunday attendance of 40-50 rising to 100+ at major Festivals. Some of our older folk now attend the mid week communion in our Whaddon Hall, as it is easier for them to access than the steep path up to the church. We are aware that there are some villagers who regularly worship in Salisbury; some of these however do join in with our house groups and support our monthly Café Church.

Refurbishments over recent years have provided a disabled toilet and a new hospitality unit at the west end. In 2021 we completed a project to convert the area in the bell tower over the toilets into an 'Upper Room'. This was originally conceived as an area where our young people could meet on a Sunday Morning – but has many other uses. Under pew heating was fitted in 2017 and a new handrail along the path to the church was installed in 2018. The font has been reset to its original location near the west entrance and lighting changed to more eco-friendly LED lighting. In 2023 we commissioned a new Altar Frontal from Sophie Hacker to replace our 3 ageing Frontals. In 2024 we replaced our aging overhead heaters with more efficient modern units. This gives us better flexibility with our heating.



Children and families work are of particular importance. We have 4 children who regularly attend a Sunday service ranging from 6yrs – 17yrs. On the 2nd Sunday of the month, we have Sunday squad for the 3-11yr olds.

The decision was made in 2022 that our focus would be on work with families rather than our previous monthly children's clubs. In 2023 we had bi-monthly events on various days and times: a Pancake party on Shrove Tuesday, Experience Easter on Good Friday, Messy church and Muddy church. In 2024 we had Palm Sunday and Harvest Messy Church attended by 7 families and 15 children. In December we organised a



Star Trail around the village. Our children's work team have also made nativity figures to go in an old unused bus stop at the top of the village. This has received over 100 likes on the Village Facebook Residents page.

Our weekly Baby and Toddler group welcomes village families and has resulted in several baptisms.

Worship at Alderbury and West Grimstead school is led every Wednesday by members of St. Marys and our previous incumbent - and once a month by our very enthusiastic Open the Book team



The church runs a Coffee Shop in the village hall one morning a week. This has proved very popular and has met a real need within the village. Average attendance is around 40 each week.

Many of those who come have little or no connection with the church, and there is a real opportunity to get to know these people better and how we can best serve them. For a number of years income generated by the Coffee Shop has funded the purchase of Bibles for each Year 3 child at Alderbury and West Grimstead School.



The church finances are in a relatively healthy position thanks to the overall reserves that have been built up in recent years. We currently give 10% of our offering income to mission groups and charities. The majority of church members now give regularly to St. Mary's via the Parish Giving Scheme.



The last Quinquennial Report was completed in October 2023 and we are working on carrying out the priority repairs. Wildlife areas have been created in the churchyard in the last couple of years.



A recent Remembrance service held at the village War Memorial

Church Services

On the first Sunday of the month a Café style church service is held in the village hall. This is open to all and is well attended. During the vacancy these are being led by our LLM and a retired vicar. The second Sunday of the month is generally Holy Communion with Sunday squad.

The third Sunday is All age Worship , which is lay led. PowerPoint is used most months at this Service when there is a small music group instead of the organ. The fourth Sunday is a Healing communion with the laying on of hands.

There is a robed choir of ten which is augmented to 20 for special Services. There is an active lay ministry, with intercessions, administering the chalice, and laying on of hands at healing services undertaken by lay people. Those that have completed Lay Worship Leaders training also take services. There is a mid-week Communion each Wednesday in the small church hall at Whaddon.



Rogation Sunday at Witherington Farm

There are currently three House Groups, two of which are ecumenical. Two meet weekly, and the other twice a month. These groups are attended by almost half of the church fellowship. There are also three prayer groups; a Julian group, a Healing group, and a group that meets on the first Sunday of the month to pray specifically for the life of the village.

Ministerial Support

There is one Licensed lay Minister, three Lay Pastoral Assistants and one Lay Worship Leader in the congregation. We also have 2 retired ministers with permission to officiate.

The Lay Pastoral Assistants provide pastoral care for individuals, families and groups within the church and neighbourhood, and meet regularly with the incumbent

We are fortunate to have a number of volunteers to support our children's work – all suitably DBS checked and monitored by our St. Mary's Safeguarding officer

Our building work and renovations are overseen by one of the Wardens, and we have an active Lay Chair to the PCC.

The church sponsors a number of activities and organisations under the strapline "St. Mary's In The Community":

- A weekly Coffee Shop, as detailed earlier.
- A lunch club for older people in the village.
- Tear Fund Quiz Evenings
- Mothers Union, Baby and Toddler Group and Wives Group.
- A monthly village magazine is published and distributed throughout the villages of Alderbury and West Grimstead.

Locale

The village of Alderbury lies just off the main A36 Salisbury to Southampton road, and is five miles to the south of Salisbury. It has a population of around 3,000. There is a popular Public House and two shops including a Post Office. In the centre of the village is a newly refurbished village hall and social club. Village activities include a Baby and Toddler Group, Rainbows, Brownies, Beavers, Cubs, Scouts and Explorers. There are also very active Tennis and Football Clubs; a Lawn Bowls Club; an Amateur Dramatic Society, a Gardening Club and a weekly Church-run community coffee shop.

There is a good regular bus service on the main route to Southampton, Romsey and the New Forest. The M27 is about 10 miles south of the village, and access to the M3 at Basingstoke is 30 miles north-east. The New Forest is ten minutes away. The main Salisbury Station is about 5 miles away, with services to London, Southampton and the West Country via Yeovil. There is also a small rural station at West Dean on the Salisbury – Southampton line.

The nearest Supermarket is a large Tesco and a Lidl approximately 3 miles away towards Salisbury. There is a Sainsburys and a Waitrose/John Lewis within the city, and an Aldi on the north side of Salisbury.

Alderbury and West Grimstead Primary School

In 1993 a new Church of England Voluntary Aided Primary School was built in the village to serve the villages of Alderbury and West Grimstead. There are approximately 146 children on roll and the school has recently become an academy as part of the Pickwick Academy Trust. There are strong links between the churches and the school and several church members are Foundation Governors.



Our last SIAMS inspection in November 2023 concluded that 'Alderbury and West Grimstead is a highly successful church school with strong Christian leadership'. The report states that 'Leaders live out the distinctive Christian vision of building strong foundations for life. They are inspired by the biblical underpinning of the parable of the wise and foolish builders. Leaders' strategic oversight and day to day management of school improvement is strong and purposeful.'



Alderbury Pre-School

The village has an excellent pre-school which has recently moved into a brand new building co-located with the school. Its mission is to provide; high quality, accessible and affordable care and education for all children from the age of six months to the start of primary school. The pre-school was rated as 'Good' in all areas by Ofsted in January 2023.

Alderbury and West Grimstead Primary School
Christingle Service held in St. Marys Church.

The Parish of West Dean with East Grimstead

The Parish of West Dean with East Grimstead comprises two rural villages in farming countryside located about 2 miles apart, each with a church and its own distinct and separate community. There is one PCC and a Churchwarden for St Mary's church. The position of Churchwarden for East Grimstead is currently vacant.

The Community in West Dean

The village of West Dean is nine miles south-east of Salisbury and approximately mid-way between Salisbury and Romsey. It is on the Hampshire-Wiltshire border and lies in both Hampshire and Wiltshire. It has a railway station on the Salisbury to Southampton line with hourly links in both directions. The village has a population of about 300, and residents are a mix of those who commute to work, some work locally in the village sawmill, surrounding farms, or small rural business park, and an active group of retired folk.



The number of children in the village is around 50, with primary school age children attending the nearby C of E school in the Hampshire village of West Tytherley (in the Diocese of Winchester) and a pre-school group meets weekly in the village hall.

The village has an active social life centred on the Church, the Village Hall and Parish Council who between them organise numerous events through the year, reflecting a strong community spirit in the village. The largest of the events is the Fete, organised jointly by the church and the village, which attracts more than 3000 people from the surrounding area and is recognised for its great variety of attractions.



There are regular quiz nights, Over 60's lunches, coffee mornings, and annual Harvest Supper, Christmas parties and Panto. Newcomers to the village remark on how welcoming and inclusive the village is.

Communication with the villagers is mainly through regular emails from 'The Friends of West Dean', a service voluntarily run by a local family, the monthly Dun Valley News (DVN), a printed village magazine for East Grimstead, Farley and Pitton, and flyers advertising forthcoming social events.



The Church of St. Mary's West Dean

St Mary's Church was built in 1866 on the road leading out of West Dean to West Tytherley. It replaced a much older, mainly 14th century, St Mary's church which lay 300 yards north east of the current church. Part of the old church remains on the original site as the De Borbach Chantry which is maintained by the Historic Churches Conservation Trust.

The Norman Font bowl, 13th Century piscina and a shaft with a decorated capital, made into a lectern, were moved from the former church to the current church. The Church is Grade II listed with William Morris stained glass windows.

St Mary's has seating for about 80, excellent acoustics and sits in a well-tended graveyard. An extension was built in 2005 to create a small room used as a chapel and PCC meeting room, and a disabled toilet, and wheelchair access.

This was mainly funded by a grant given by the C of E following the sale of the Vicarage as a private home.

Currently, the church has recently completed 4 main schemes of work; repairs to the church roof, new rainwater soakaway and drain, replacement of timber floors in the nave and complete internal redecoration. We are continuing our campaign to explain where church funds come from, how we use them and the need to raise additional funds for further maintenance. Previous appeals have proved positive, and we are currently working on the final phase of restorations.

Average attendance at services is about 13. Attendances at Easter, Remembrance Sunday and particularly Christmas are much higher. Many villagers, while not regular attenders, do support the church in other ways such as financially or with church maintenance. There is potential and willingness for the church worshippers to work in partnership with the vicar to grow the congregation.

There is a small, committed group of worshippers who take an active role in church. They are keen to share the Christian message in a relevant way to all villagers. A small bible study group used to meet regularly and we are considering how we revive that. One PCC member helps regularly at the village Toddler Group called Busy Bees. Since 2019 we have run an informal Breakfast Church in the village hall monthly.

There are church representatives on a local charity which gives financial support to those in need in the Parish.



East Grimstead village

The village of East Grimstead is closer to Alderbury and Salisbury and has a population of about 200 which has been growing in recent years. The children attend primary school in Alderbury or go to boarding school. The households are a mix of active retirees and working age families who commute to work or work from home. The village is welcoming, friendly and has an active social life. The 'Reading Room' which is the village hall, is the venue for the well-attended village breakfasts and other social events throughout the year.

Holy Trinity East Grimstead

The church in East Grimstead, Holy Trinity, is small and has often hosted Holy Week Iona services. It is a good place for contemplative worship especially in the summer months. One communion service a month is usually held at the church, with average attendance only a few, although the church is always full for the annual carol service. At the beginning of 2025 the church was seriously being considered for closure, however a public meeting raised significant village interest, and now ten members of the village have realistic plans to actively raise the £10K needed a year to keep the church open and cover fabric repairs. This journey has awakened village life and its support for their well-loved church. The 'Save our Church' group has convinced the PCC that closure can be taken off the agenda, although the financial situation will be reviewed early in 2026.



West Dean and East Grimstead Parish Finances

The accounts for both village churches are held in the same bank account. In a typical year the giving from the Parish Giving Scheme, standing orders, envelopes and cash, together with the reclaimed tax, just cover the Parish Share payment. Everything else; utilities, insurance, cleaning, churchyard costs and routine repairs – have been financed by fundraising. The annual West Dean village fete allocates typically about £4k. We have persisted with our plans to use all the money in our investment account, except for a reserve for further repairs at St Mary's.



The Parish of West Grimstead

The small village of West Grimstead has a population of about 300.

The church is small, in good repair and is probably the oldest church in the Team with records showing the first Vicar as Ricardus Brione in 1274. Visitors often remark on the calm and holy atmosphere in the church, and this is something much appreciated by the small but very committed congregation generally numbering about 13 (more on special occasions). Our average Sunday attendance has been stable for more than a decade, with the family service growing. One Sunday of the month, people gather in a home for informal hymn singing, discussion on a Christian theme and prayer. Coffee after morning service provides a valued opportunity for fellowship.

The church itself is kept clean and full of flowers by a rota of helpers. Recently, two local young people have chosen to make cleaning the church part of their community service for their Duke of Edinburgh Award. The churchyard is mowed by helpers, too. While the grass around the graves is kept mown, the grass closer to the church is allowed to grow longer and is sometimes grazed by sheep. This area has also been extensively planted with snowdrops and daffodils, and looks beautiful.

We have a Lent Group each year which numbers about nine people including one member of the Baptist Church.

Although we no longer have a school building in the village, we do have a share in Alderbury and West Grimstead School (located in Alderbury). During the summer term Year 6 children come to St. John's for a 'Retreat Day'. Some of our church members help (most theatrically) with 'Open the Book' in school.

Each Christmas we hold a tea party where guests (mainly senior citizens) are treated to a delicious tea with plenty of cake (!) followed by carols led by our vicar. This event attracts people who do not attend church at any other time. We also have monthly tea parties, which are enjoyed and well attended.

Pastoral care and visiting is undertaken by our vicar and members of the congregation who are attentive to the needs of their neighbours as part of our service to the community. The Village Hall Committee hold a coffee morning four times a year at which church members run a home produce stall including cake, eggs, vegetables and other home-produced items. This is a great opportunity for the vicar and church members to have pastoral contact with villagers, and it also helps to raise money for church funds and mission projects.



Other Parishes in the Clarendon Team

Whiteparish

A village of 1500 people, Whiteparish is the most southerly of the Clarendon parishes. It has the usual large village amenities as well as a doctors' surgery.

The Church in Whiteparish is situated in the centre of the village and dates from the 13th Century.



Dawn Service on
Easter Sunday 2023

A variety of services are held to cater for our congregations. Breakfast Church with Family Communion was introduced five years ago to encourage families and to give them another Sunday with an all-age focus. We hold an annual Pet Service at the local stables and a 'Songs of Praise Service' in the Memorial Hall. The Church has a talented choir and we also have a Music Group, including both adults and children which plays for the All-Age Service. We have a well-attended Julian Group which meets weekly and operate an active prayer chain. There is a thriving Home Group which meets twice a month and more frequently in



Advent and Lent.

There is a very active group of Lay Pastoral Assistants in Whiteparish who care for all those in need and welcome newcomers to the village.

Church members have been instrumental in organising village-wide picnics and other events for national celebrations and, together with the school, organise the annual village fete. Our 'Music in Whiteparish' team promotes several concerts each year, fundraising for the church and local charities.



Salisbury Cathedral Choir
July 2023



Preparing for an Open the Book
Collective Worship 2023

Our links with Whiteparish Church of England Primary School are strong with Foundation Governors being regular visitors and together with other members of the Church community present Open the Book in collective worship once a month. The Vicar leads worship in the school on a regular basis.

Winterslow

Winterslow is a large parish including East, West, and Middle Winterslow, Lopcombe Corner and Firsdown with a total population of about 3,000.

Winterslow Primary School is C of E Aided of about 180 children with strong church links. The Rector leads collective worship and the parish church's Open the Book team regularly visit the school. About once a term, the school, including parents, attend the church for a school service.



The Village Hall is heavily used by organisations and is the hub of village life. It includes a daily Coffee Shop run by ecumenical church volunteers which raises c £1,000 p.a. for charities.

The Parish Magazine, run by the church, includes news from many societies including three local Free Churches.

Services at All Saint's include Parish Eucharist and All Age Morning Worship services. Attendance is typically about 32. At St John's there is an early Eucharist on alternate Sundays with an attendance of 10 to 15. We have recently introduced Breakfast Church in the Village Hall to encourage new and younger members. House Groups meet regularly, the Intercessory Prayer Group meets weekly. A Parish Life Committee organises social and fund-raising events as part of the Church's Outreach programme.

Two miles away, St John's Church (1860) seats about 40 and is closer to population centres. All premises are in a reasonably good state of repair. The Schoolroom next to St. John's Church has been converted into the Clarendon Team Office and this is where the Team Administrator is based.

The Reserve Fund is sufficient to cover one year's parish share and the Premises Fund will cover most eventualities. We always pay its share in full, we meet our PCC policy of donating 10% of our giving income to charities (home and overseas).

Farley with Pitton

The villages of Pitton and Farley are about 1½ miles apart. Approximately 140 dwellings in Farley and 190 in Pitton have a population of c750. Farley Hospital (Alms houses) consist of eight dwellings and the Wardenry and are immediately opposite All Saints' Church.

Pitton Primary School is C of E and is within the Pickwick Academy Trust and the former school in Farley now accommodates a privately run nursery school. A pre-school group meets at Pitton Village Hall.



Both villages have a pub and a Village Hall. There are a range of social groups; such as men's and women's clubs, book clubs, theatre club and sporting activities, such as walking group, petanque and tennis.

All Saints' Farley can accommodate 150 people and has the benefit of Village Hall nearby. It hosts the Farley Music Festival each summer and is the venue for other occasional concerts, the proceeds of which are given to All Saints'.

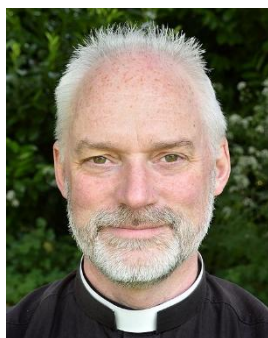
St Peter's Pitton dates back to the twelfth century with a major Victorian rebuilding. It is a more modest building with a good stained-glass window. Some pews have been removed to allow a gathering space within the building.

The church entered into a Declaration of Ecumenical Welcome on 9th May 2008 following the closure of the Methodist Chapel in Pitton. A Methodist service is held at St Peter's every month and the relationship with the Methodist Circuit and with Rev Bryan Coates is highly valued.

Informal prayers are held in St. Peter's Pitton every Tuesday at 9.15.—There is a Children's group called the PathFinders who meet at a bi-monthly Family Service. Pitton's lay-led Tuesday Group meets weekly or fortnightly in term time for Bible Study and reflection. 'Tea, Cake and Chatter' is held on Tuesday afternoons for the community as a whole and is particularly popular with older people. Lent courses and Advent courses are run every year.

There are two lay pastoral assistants (LPAs) who work in Pitton but both villages have good neighbourly support. There are chalice administrators and intercessors in each church.

Meet the Ministry Team



Revd Dr. Simon Chambers – Team Rector

I joined the team in April of 2018, moving from the Team Ministry in Shaftesbury. I have a love of rural ministry, having served my last two posts in multi-parish rural settings. Ordained in the Diocese in 2002, I was previously the Technical Director of a small electronics firm just south of Dorchester, Dorset and I am still able to fix a microphone or get behind a website. I have a passion for vocations and how personality types connect with God, love Classic VW vehicles, music (now playing the Baritone), and of my family: Jenny, a professional cake maker, and our two children Grace (13) and Arthur (12).



Revd Jane Dunlop – Self-supporting Team Vicar

I have lived in Whiteparish for 27 years. We located here from Bermuda in 1997 because we needed to live near Southampton for my husband's job but yet wanted to be in the catchment area for the Salisbury Grammar schools. Whiteparish suited us very well and we have loved living here in this welcoming community.

I was ordained in 2010 and my ministry has always been within the Clarendon Team, although since 2016 I have been working full time as Vicar of Whiteparish.

Debbie McIsaac – LLM



I am Lay Chair of the Clarendon Team Council and a Licensed Lay Minister. I am Canadian, a lawyer by profession and Director of Development and Professional Standards at an international law firm. I did post-graduate studies at Wycliffe College Oxford and Ripon College Cuddesdon and taught on the diocesan Learning for Discipleship programme and was tutor to an LLM group of students at Sarum College. My academic interest is in the period between the Testaments. I have been a member of General Synod since 2010. Living in Pitton, I have two adult children in London and a lovely cocker spaniel.

Michael Barratt – LLM



I was licensed as a lay minister in 2013 and held a licence for the Clarendon Team ever since. Previously, I was a solicitor employed by a financial services company as well as holding elected political office as a Brighton Councillor between 1986 and 1997. I enjoy preaching and am also a Spiritual Director. I'm a keen amateur astronomer, a Member of the British Astronomical Association, and a fellow of the Royal Astronomical Society, writing a monthly "Sky at Night" article for each of the Team's parish magazines and currently writing a book on astronomy for beginners. I was brought up in the Lincolnshire fishing town of Grimsby and studied law at Liverpool. Married to Liz, a Spiritual Director and Counsellor, having five children between us, three of whom currently live abroad and two in Wiltshire.



Sharon Grant – LLM

I formally joined the Clarendon Team in December 2023, but before I trained and served in Spain for several years before relocating back to the UK. I live in Alderbury but take services across the team.



Team Administrator – Rachel Funnell

I have joined the Clarendon Team in 2023 having previously worked for an NHS charity for a decade. I'm married to Simon Funnell and we have two grown-up children. When I'm not working, I love walking, running and cycling, I enjoy entertaining hope to do lots of travelling. I have been an active member of Farley All Saints for over 30 years.



Assistant Team Administrator – Debbie Case

In addition, we have 20 Lay Pastoral Assistants, and four Lay Worship Leaders.

What We are Offering

- A lovely place to live: great walks, good road and rail connections, five miles from Salisbury, 30 mins from Southampton, 45 mins to the sea and great beaches, all situated on the edge of the New Forest.
- Excellent schools locally and Secondary schools in Salisbury
- A warm welcome from our rural communities.
- An established and experienced ministry team.
- Our love and prayerful support.
- Our openness, commitment and hard work.
- A comfortable four bedroomed vicarage.
- All usual and reasonable expenses covered by the Clarendon Team Council.
- Support of a paid Team Administrator and Assistant Team Administrator (mornings, five days a week)
- Access to a great theological college and its library (10 mins).
- Space for your own personal development and ministry.

Role Description

As a Team Vicar we are looking for someone:

- To provide pastoral oversight and leadership of the three Parishes of Alderbury, West Grimstead and West Dean with East Grimstead.
- To be a partner with the other clergy and with the ministry team in our common mission and ministry.
- Within your pastoral area to:
 - Encourage and support lay leaders, LPAs and other volunteers.
 - Recognise and equip others for ministry.
 - Endeavour to meet the pastoral needs of those in the parishes.
 - Be actively involved in children's and families work, working alongside existing teams.
 - Work with the elderly and the less elderly retired people within the Parishes.
 - Attend village events and participate in village life to establish and nurture relationships.
 - Oversee PCCs and work with lay chairs and office holders as required.
 - Lead and enrich worship, working together with others.
 - Be responsible for Occasional Offices.
- Take an active role as the *ex officio* Foundation Governor at Alderbury and West Grimstead Church of England Primary School.
- Act as Trustee of ecclesial connected charities (Alderbury Relief in Need 801546).

Person Specification

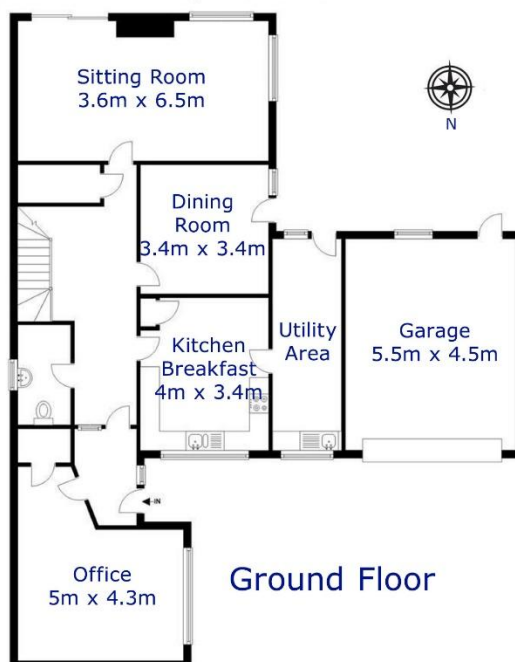
We are trusting God for someone who:

- is grounded in prayer: good at listening to God and others.
- inspires people through their preaching and teaching.
- is able to work collaboratively and independently and recognises when to do so.
- is open and honest and finds it easy to connect with everyone in the communities.
- is pastorally gifted, has compassion for others and a will to serve.
- enjoys rural life and engaging with the personalities of different rural communities.
- is comfortable with sacramental/non-sacramental worship.
- works towards building unity with a joyful acceptance of diversity.
- excels at working collaboratively with others, lay and ordained, across parish and other boundaries.
- is experienced and skilled in thinking strategically, and encouraging others to share in a common purpose.
- ensures a balance between ministry and personal time, who takes days off and their annual retreat.
- has a full UK driving licence and access to a vehicle to be able to get around.

The Rectory

Alderbury Rectory (*historic name*) is a modern two storey house built in 1970, situated in a quiet cul-de-sac in the centre of the village. It is in good decorative order and has a fairly typical layout. It has a large lounge, dining room, recently refurbished kitchen with separate utility room and WC on the ground floor. It has four bedrooms, one of which is en-suite and a family bathroom on the first floor. It also has a double garage, a large patio to the rear and a medium garden which backs onto a children's play area which is a part of the recreation ground. An extension has been built to the front of the house to provide a separate purpose-built study (seen on the left of the picture below). Its location means that anyone in the study can see those approaching the house and can meet them at the door without disturbing anyone else in the house. The Property has good broadband and mobile phone coverage.

[Location on Google Maps:](#)



First Floor

Secondary and Further Education

Alderbury is within the catchment area of the Trafalgar School in Downton, 5 miles away, where secondary education (Yr. 7 -11) is provided. There are two grammar schools (yrs 7-13) within the city, and a mixed secondary school in Laverstock, on the North side of Salisbury. The same site is also home to St. Joseph's Catholic School. There are other secondary schools in the local area, in both Romsey and Fordingbridge.

Further Education is provided by 'Wiltshire College and University Centre Salisbury', on the Southampton Road into Salisbury and Salisbury 6th Form College located nearby on Tollgate Road. Brockenhurst 6th Form College and Totton College slightly further away. See links below for further information.

Links to Local Schools

Alderbury & West Grimstead Primary School: www.alderbury.wilts.sch.uk

Alderbury Pre School: www.alderburypreschool.org

Trafalgar School: www.trafalgar.wilts.sch.uk

Grammar School: www.bishopwordsworths.org.uk

Grammar School: www.swgs.wilts.sch.uk

Wyvern St Edmunds Mixed Secondary School: www.wyvernsted.org

Catholic Secondary School: www.sjcs.org.uk

Further and Higher Education: www.wiltshire.ac.uk/salisbury-campus

Salisbury 6th Form College www.salisbury6c.ac.uk/

Brockenhurst 6th Form College www.brock.ac.uk/sixth-form/

Totton College www.totton.ac.uk/

Appendix Information



The Diocese of Salisbury

“Making Jesus Known” is the vision for the Diocese of Salisbury. It was affirmed by diocesan synod in June 2023.

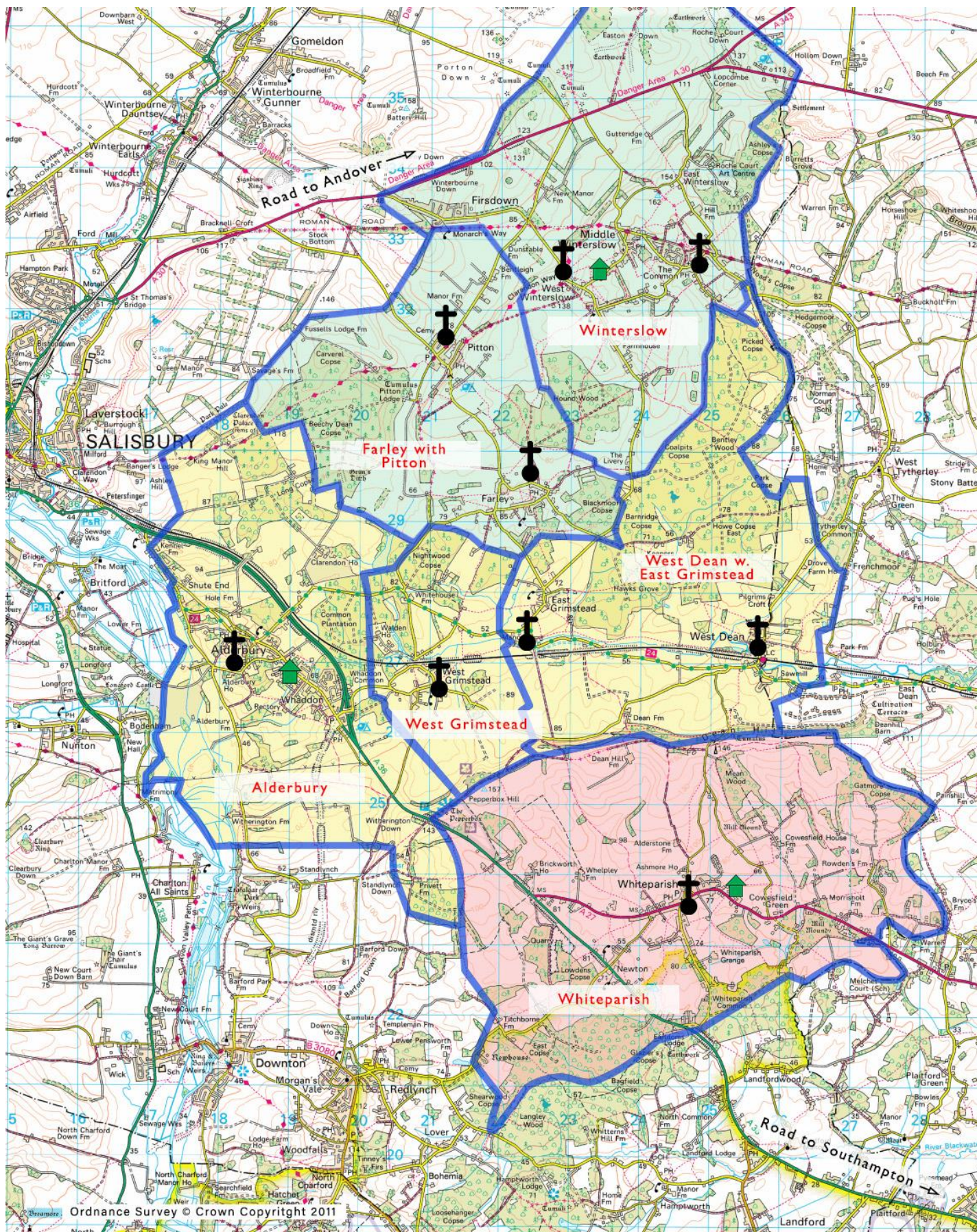
The vision pledges that together, as Christians in the diocese, we will make Jesus Christ known in every place, so that all might flourish and grow, seeking his Kingdom, here and now.

It sets out five clear priorities for us all to work to establish over the next decade – developing courageous Christian leaders, working together for justice, developing creative partnerships in local mission, championing climate justice and finally – if we are to achieve the first four priorities- ensuring we have a sustainable financial basis for mission.

At the heart of the priorities is a commitment to revitalise churches for mission.

More information can be found at

<https://salisbury.anglican.org/whoweare/making-jesus-known-/>



Map of the Clarendon Team
Parishes, Churches and Features

The Alderbury Deanery

The Alderbury Deanery has often been at the forefront in developing innovative solutions and approaches which preserve and nurture the parishes in our Deanery, develop close links with all the churches in a benefice and prioritise pastoral care.

At the end of 2024, the Alderbury Deanery Chapter met and explored creatively how leadership in the Deanery, and Chapter, could be taken forward in a courageous, innovative and sustainable way when our very able Rural Dean (who more recently served as assistant Rural Dean) indicated she wanted to step down from that role. Revd Peter Ostli-East offered to be the named person as Rural Dean for a period of 12 months, starting in January 2025. He is supported by all members of Chapter in a collegial, collaborative way, without the need for a formal appointment of an Assistant Rural Dean or a restructuring. We know that this leads us to even closer co-operation which will be the most effective way of *Making Jesus Known* in our Deanery.

Alderbury Deanery consists of:

- The Clarendon Team in the centre of the Deanery. The Rector is Revd Simon Chambers who lives in Winterslow and the other Team Vicar is Revd Jane Dunlop who lives in Whiteparish. It is the biggest benefice in terms of population and worshipping community numbers. The Team Vicar will live in Alderbury, the second largest village in the benefice;
- The Forest and Avon Team to the south which includes the Village of Bramshaw in the New Forest and the large village of Downton (no relation to the Abbey). The Rector post has just become vacant, Revd Veronica Batchelor lives just outside the Deanery and exercises her ministry primarily in Downton.
- The Bourne Valley benefice to the north stretches from Winterbourne Earls (a few miles north of Salisbury) to Cholderton on the edge of Salisbury Plain and the A303. Revd Peter Ostli-East is the incumbent and is helped by a hospital chaplain and retired clergy who live a short distance away in Salisbury.



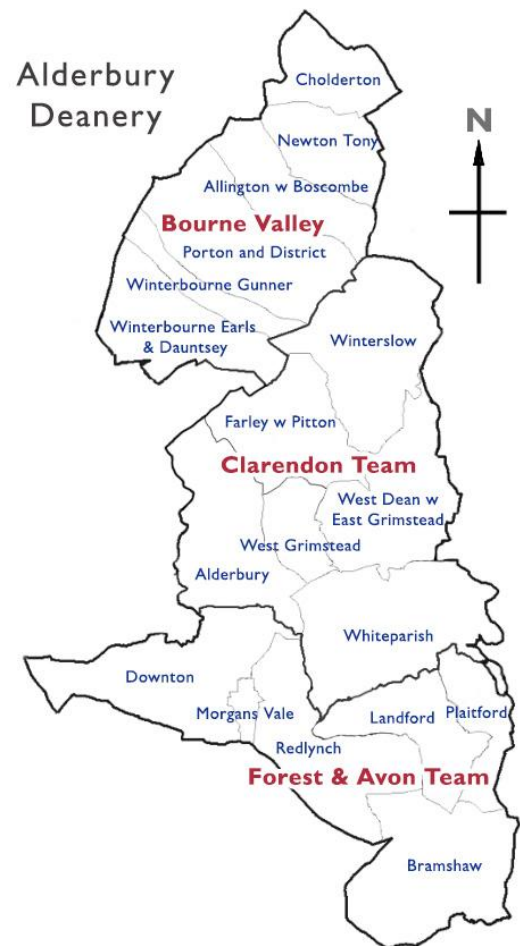
There are currently 4.5 stipendiary clergy posts in the Deanery and a full-time non-stipendiary Team Vicar (Revd Jane Dunlop) in Clarendon. We enjoy the ministry of a range of ministers, lay and ordained and invaluable support from churchwardens and others. The Deaner has an able and committed Lay Chair and Deanery Treasurer. Training for Lay Worship Leaders and other such as well as other roles are offered by the Deanery.

Chapter has been described as 'open, warm and supportive'. We get along well and enjoy being and working together. Monthly Chapter meetings offer good fellowship, shared prayer and a forum for mutual support and robust discussion. Food is often involved as well!

Of course, we face the same challenges as many rural churches in the country – ageing population, declining congregations (and collections) and a challenge to find people willing to be churchwardens, PCC members and Deanery Synod reps. By working together and making timely changes, Alderbury Deanery is seeking to implement the Salisbury Diocesan Vision and Strategy of Making Jesus Known in ways that meet the needs and aspirations of the congregations in the various parts of the Deanery.

If you would like to know more about the deanery– please do not hesitate to contact me.

Revd Peter Ostli - East - Rural Dean



The 6 churches in the Bourne valley are: St Nicholas, Chalderton; St Andrew, Newton Tony; St Andrew, Allington w Boscombe; St Nicholas, Porton and District; St Mary, Winterbourne Gunner; St Michael and All Angels, Winterbourne Earls and Dauntsey

The 8 churches in the Clarendon Team are: All Saints, Winterslow; St Peter, Pitton; All Saints, Farley; St Marys, Alderbury; St John, West Grimstead; Holy Trinity, East Grimstead; St Mary the Virgin, West Dean; All Saints Whiteparish;

The 6 churches in the Forest and Avon Team: St Laurence, Downton; St Birinus, Morgan's Vale; St Mary, Redlynch; St Andrew, Landford, St Peter, Plaitford; St Peter, Bramshaw.

Population, Electoral Roll & Worship Community

	Population (2023)	No on the Electoral Roll	Worship Community 2024
Alderbury	2,354	68	61
West Dean & East Grimstead	618	42	14
West Grimstead	363	20	16
Others	4845	217	58, 46, 34
Total	8180	344	229

Funerals

	2024	2023	2022	2021	2020
Alderbury	8	10	6	4	4
West Dean & East Grimstead	5	2	4	1	3
West Grimstead	3	1	3	0	2
Other	25	24	8	25	29
Total	41	37	21	30	38

Weddings

	2025	2024	2023	2022	2021
Alderbury	5	5	7	4	3
West Dean and East Grimstead	2	1	2	2	3
West Grimstead	0	0	1	2	2
Other	7	4	8	8	9
Total	14	10	18	16	16

Baptisms

	2025	2024	2023	2022	2021	2020	2019
Alderbury	3	3	5	4	5	3	8
West Dean and East Grimstead	2	0	2	3	2	0	0
West Grimstead	0	2	0	1	1	0	1
Other	11	21	15	13	7	2	15
Total		26	22	21	15	5	24

Pre Vacancy Sunday Service Pattern

1st Sunday of the Month									
	Alderbury, St Mary's	West Grimstead, St John's	West Dean, St Mary's	East Grimstead, Holy Trinity	Whiteparish, All Saints	Farley, All Saints	Pitton, St Peter's	Winterslow, St John's	Winterslow, All Saints
8:00am			BCP Eucharist						
9:15am		Parish Eucharist			Morning Worship				Parish Eucharist
11:00am						Parish Eucharist	All Age Service		
4:00pm	Café Church								
2nd Sunday of the Month									
	Alderbury, St Mary's	West Grimstead, St John's	West Dean, St Mary's	East Grimstead, Holy Trinity	Whiteparish, All Saints	Farley, All Saints	Pitton, St Peter's	Winterslow, St John's	Winterslow, All Saints
8:00am								Early Eucharist	
9:15am	Parish Eucharist	Morning Worship			All Age Eucharist with Breakfast				Breakfast Church / Parish Eucharist
11:00am			Parish Eucharist	Iona Service (Seasonal)		Morning Worship	Parish Eucharist		
6:00pm					Evensong or Compline				
3rd Sunday of the Month									
	Alderbury, St Mary's	West Grimstead, St John's	West Dean, St Mary's	East Grimstead, Holy Trinity	Whiteparish, All Saints	Farley, All Saints	Pitton, St Peter's	Winterslow, St John's	Winterslow, All Saints
8:00am					BCP Eucharist			Early Eucharist	
9:15am	All Age Service	Hymns at Hollyville	Breakfast Church (seasonal)						Parish Eucharist
11:00am					All Age Service	Parish Eucharist	Methodist Service		
4th Sunday of the Month									
	Alderbury, St Mary's	West Grimstead, St John's	West Dean, St Mary's	East Grimstead, Holy Trinity	Whiteparish, All Saints	Farley, All Saints	Pitton, St Peter's	Winterslow, St John's	Winterslow, All Saints
8:00am		BCP Eucharist						Early Eucharist	
9:15am	Parish Eucharist				Parish Eucharist				Morning Worship
11:00am				Parish Eucharist			Parish Eucharist		
6:00pm									
5th Sunday of the Month									
10:00am	Team Service in one church								

Financial Overview

The following table gives a briefest of overviews to the financial position of each of the parishes from the accounts in 2025.

Reports for APCMs are published on our website <http://ClarendonCofe.org/tv2025>

	Diocesan Share	Total Income	Total Payment incl. share	EOY Assets Unrestricted	EOY Assets Restricted
Alderbury	£37,359	£58,267	£61,825	£120,330	£44,862
WD w EG	£15,710	£55,112	£59,170	£13,700	£3,000
W Grimstead	£6,721	£10,164	£9,751	£2,019	£7,273
Whiteparish	£24,302	£74,690	£71,384	£25,929	£26,338
Pitton	£14,399	£28,256	£27,534	£150	£5,112
Farley	£10,559	£50,749	£81,249	£9,921	-£2,564
Winterslow	£44,756	£61,141	£81,705	£53,581	£54,785

Brief History of the Clarendon Team and Team Council

There is a long and historic association between St. Mary's Church Alderbury and St. John's Church West Grimstead but whether it goes back as far as the Domesday Book, in which both villages are mentioned, is not known. There is also a long association between the churches of West Dean and East Grimstead and Farley with Pitton which are known as the Dun Valley. Having started under the auspices of the then Rector of West Dean in 1970, the Dun Valley News continues to be published and distributed to the people living in the four villages.

From the middle of the 1980s, ministry teams were being established. Then, as now, the teams usually comprised of a number of Parishes, each with their own or a shared Vicar and a Team Rector who also ministered to a Parish or Parishes.

On 21 May 1991, the Privy Council approved a pastoral scheme for the establishment of a new Benefice called the 'Alderbury (Team Ministry)' which consisted of the Parishes of Alderbury, West Grimstead, West Dean with East Grimstead, Farley with Pitton and Whiteparish. The Team Ministry was to consist of a Rector and two Vicars. A former Reader (and husband to the resident self-supporting minister) who lived in West Dean wrote in 2008 that on first establishment:

'There had been no formal advice from the Diocese, at that time or subsequently, as to what a Team should be, how it should operate, or how the individual parishes should relate to one another. Each Team was expected to work out what being a Team meant for them in their particular situation. Whether or not there was informal advice given to Rectors is only a matter for speculation.'

24 years on

The Clarendon Team is 24 years old this year. Shortly after the retirement of the Rector of Winterslow in 2000, a new team ministry was formed from the old Alderbury Team and the parish of Winterslow. The name 'Clarendon Team' was chosen "(mostly on egalitarian grounds) to avoid naming the new team after one of the parishes". Clarendon being a large (extra parochial) estate lying between Pitton and Alderbury which was a former royal hunting lodge. The original, time-limited, Order made in 2001 was replaced in 2005 with a new Order with no expiry date.

Since that time, there have been various iterations of what is meant by being 'team' in the relationship between the Clergy, the Parishes and Churches - and where the Rector is based. Initially, when Clarendon operated as a group of Parishes, little authority was delegated to the Team. The Parishes did agree to worship together on fifth Sundays, to delegate acceptance and approval of candidates for training as SSMS, OLMs and LLMs and to fixed service times across the Team, any variation to which required the consent of the Team Council. But an essential, then and now, is for the Team to have a Team Council to whom the right of appointment is delegated by each parish.



In 2012 it became clear that we needed to clarify how we operated as a Team Council. A Governance Working Party with all members of the clergy and one member from each parish was set up. In summary, our conclusion was to try not to change the legal basis of operations but to delegate greater responsibility and authority to the Team Council (excepting local finance and buildings) and to streamline policymaking and administration. To this end, we have Clarendon policies ranging from Admission to Communion to Safeguarding which are first reviewed by the Team Council and then adopted by each PCC. The Team Council, chaired by the Rector and the elected Lay Chair meets at least five times a year to discuss matters of common interest, work through an annual agenda, plan events and so on. We have employed a Team Administrator since 2007, who is paid by a precept from each PCC and by the retention of a percentage of the fees due to the parishes for pastoral offices. We have just employed an additional administrator assistant so that we have security to cover during vacancies and for succession.

September 2025

Sept 21st 2025