



THE BENEFICE OF LUDGERSHALL AND TIDWORTH



BENEFICE PROFILE

2025



Contents

1	Welcome and Vision	3
2	Where are we?	6
3	Our Current and Future Ministry Team	8
4	Who are we? - St James	9
5	What do we do? - St James	10
6	Our Church - St James	12
7	Who are we? - Holy Trinity	13
8	What do we do? - Holy Trinity	14
9	Our Church - Holy Trinity	16
10	Our Greatest Challenges	17
11	Who are we looking for	18
12	Appendix 1: The Rectory	19
13	Appendix 2: Info about services and regular commitments	20

“The friendly atmosphere, the upbeat and relaxed services are the things I enjoy the most.”

“It is a community of friends.”

Comments from parishioners in blue italics are taken from responses to our Parish Questionnaire



St James Ludgershall, taken from the church hall.

| Welcome to the Benefice of Ludgershall and Tidworth

Welcoming, Growing , Praising.

We are inclusive, outgoing communities who regard the Church as a family, and we are excited to welcome a new Priest to join our team. In our Benefice you will be blessed with a ministry team of lay and retired clergy working together under your leadership.

Our Vision

We want to grow, and we are growing! Our vision is for continued growth resulting in many more people of all ages living out their faith day by day, and two strong churches ministering successfully to the needs of this benefice. We want to confidently demonstrate and carry God's message of love to our wider community, and to worship God reverently and whole- heartedly in our churches.

We pray earnestly for God's continued blessing on our towns and the Holy Spirit's work in drawing us nearer to Him. We pray for the person God has identified as our new Priest that, that person would answer God's calling to minister here with enthusiasm and gladness of heart.

The new Rector of our Benefice would have the opportunity to pursue the possibility to recruit a House for Duty Priest or youth worker to support the ministry in Ludgershall and Tidworth. The vicarage situated behind Holy Trinity, which is occupied at present, could be the considered residency for this post.



Holy Trinity, Tidworth.



As a Benefice we are currently working out how we can work together to strengthen and uphold one another in the faith and in our various ministries. We would like to share best practice, share the things we each do particularly well, to lighten the load and gain high quality across the Benefice.

Funds have been found to support a Benefice Administrator, who will start work from October 2025.

We want to share our existing groups such as the Bell Ringers, Prayer Groups and Home Bible Studies groups; not to mention our seasonal courses because this will bring our congregations closer together. Similarly, shared community engagement and hospitality gives us a greater reach to people who might not realise or understand the welcome that awaits them in church, as well as being opportunities to deepen our own fellowship and to draw others into the loving embrace of the Living God.

We are looking for someone with enthusiasm, energy and fresh ideas, but we are wary of short-term solutions; we are hoping for long term, sustainable growth and to have a bigger impact on our local community, rather than the promise of short-term golden bullet style gains.



Ludgershall Remembrance Sunday and School visit to the Castle



Church function, Christmas Carols at the pub and St. James Day



Primary Schools

We have five primary schools in our Benefice, none of which are church schools. However, we have a close relationship with most of them. Most of the primary school children come to their local church for a dedicated service at least twice a year, and we have run Experience Easter, which gave opportunity for profound levels of spiritual learning for our young people. It greatly moved those adults in delivering it too, and we intend to do it again.

We have a PCC member on one of the school boards of governors for Castle Primary and the schools welcome clergy and laity into school for our assemblies. Perhaps most significantly, recently saw the schools approach both churches for advice on age appropriate Christian materials for use in school and for sending home with their pupils, which it has been a joy and privilege for us to provide.

Wellington Academy

Wellington Academy is our local senior school and will welcome a church presence; though what form that might take is still very open for discussion. As all five primary schools are feeder schools to Wellington Academy, it is the next challenge to re-engage and continue the relationships already established with children at primary level through to the teenage years.

Town and Community Networks

Both churches have built strong links with their respective town councils and local community organisations. Tidworth have representatives who attend the Area Board meetings and are asked for input and direct involvement in town events throughout the year. The last 12 months has knit the St James and Ludgershall Town Council closer than ever through the creation and dedication of the new Remembrance Memorial. In both towns, Remembrance Sunday is hugely important for the churches, town councils and military contingents. We work closely to make everything run smoothly. In recent years St. James has been able reach more local people by including live broadcast of the church service.

Senior Citizens and Care Homes

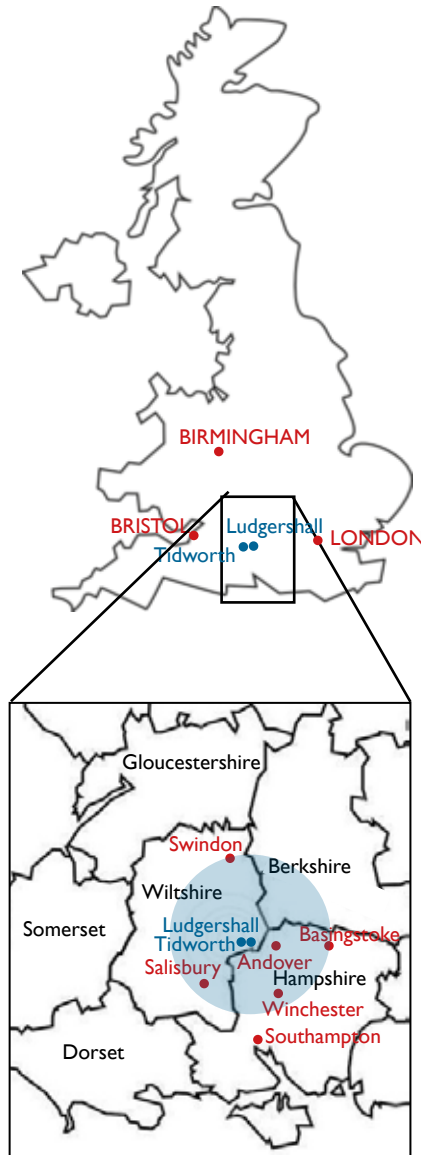
Both towns have residential care homes and/or sheltered accommodation where we have regular input, as well as strong links to numerous people in their own homes. We offer communion as well as informal fellowship as we are very conscious of the loneliness that can come from loss of mobility and becoming housebound, which is the case for a proportion of our population, including former stalwarts of both churches. It is key that this remains on the agenda for our new Rector because our older members often very much want to see 'the vicar'.



Castle Primary Leavers Service, new Tidworth
Remembrance Memorial; Wellington Academy frontage.

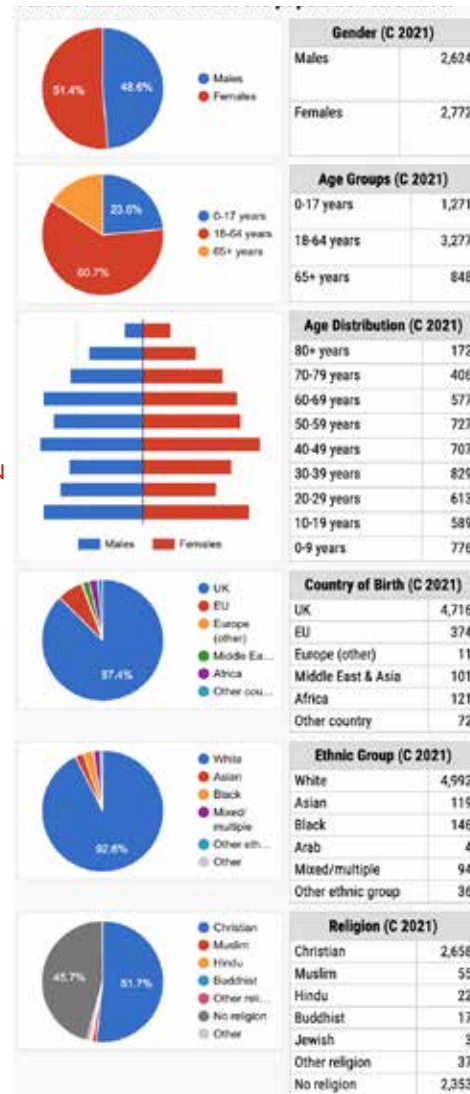
2 | Where are we?

Ludgershall & Faberstown



40min drive radius in blue on map above

THE BENEFICE OF LUDGERSHALL & TIDWORTH



Our Benefice

Ludgershall and Tidworth, are two towns on the Wiltshire/ Hampshire border, situated near the A303. Rural in context, Andover is our closest large town, with easy road access to Salisbury, Amesbury, Stonehenge, Basingstoke, Winchester and Swindon, all within 40 mins drive. Mainline rail from Andover takes you to London Waterloo in an hour and a half.

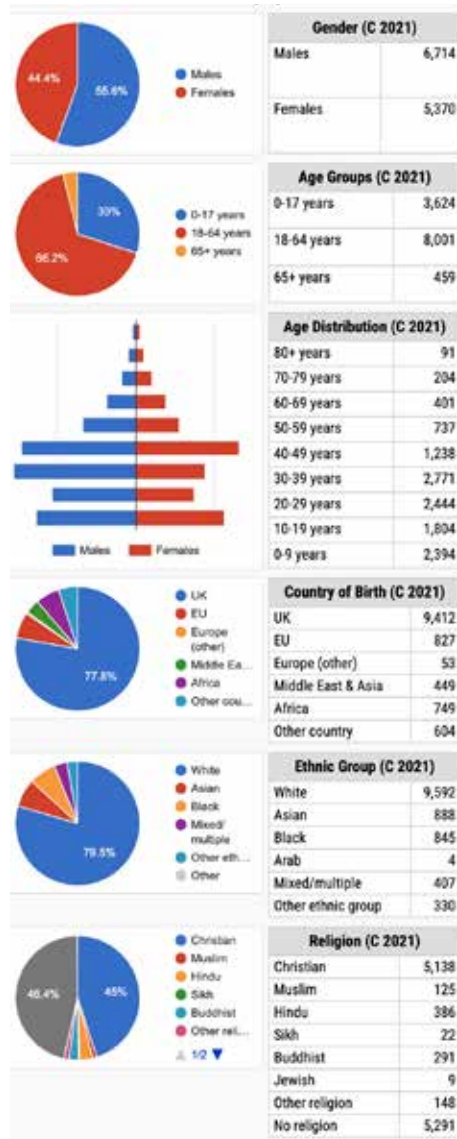
Ludgershall

Ludgershall is a small town, but well served by two small supermarkets, two pubs, a Post Office, a variety of independent shops, businesses and a Doctors' Surgery. The settlement that has become the parish of Ludgershall probably began in Saxon times, and the current church building has its origins in the 12th Century. Located on the eastern edge of Salisbury plain, a major military training ground, the town has long had a close relationship with the army. Though defence cuts have reduced the town's dependency on the army for employment in the last 10 years, the 26 Engineer Regiment hold Freedom of the Town and maintain a relationship with St James. The expansion of Tidworth Garrison has resulted in a programme of 1000 new homes being built in Ludgershall, due in part to house service families relocated to this area. Identified by Wiltshire Council as 'rural-deprived', we are by no means well off and we work hard to pay our Share.



Statistics taken from our Parish Spotlight Dashboards regarding age distribution and ethnicity across the two towns, based on census data taken in 2021. They demonstrate Ludgershall as more 'traditional town' and Tidworth as 'polarised garrison', just 2 miles apart.

Tidworth



Tidworth

Tidworth also has a long history as a settlement, listed in the Domesday Book as Todeorde, though these days is better known as a rapidly growing population of both military and civilian communities. Now Tidworth has around 23,000, of which about 12,000 are military personnel. The Tidworth/Netheravon/ Bulford Super garrison is the single largest in the UK.

Tidworth amenities include two supermarkets (Tesco and Lidl); one vets; several hairdressers; We also have a brand-new Civic Centre some smaller shops including several Caf  s and take-aways two dentists and a doctor's surgery; a garage; and a leisure centre incorporating a 25m pool, gym facilities and library; these are insufficient for the size of town. People tend to shop in Salisbury or Andover. Since Army pay for enlisted people is relatively low, it is common for families to have more limited access to a car, leading to increased isolation because public transport is expensive. The voluntary sector is limited in the same way as the infrastructure of the town as a whole, but at Holy Trinity we try to step up to the needs of our community, both civilian and military.

The aspects of Tidworth which exhibit deprivation sit side by side with some prestigious landmarks; the polo club, second largest in the country which has played host to Prince Harry and William, we also have a Golf club and Tedworth House which is used by the military for rehabilitation of disabled soldiers.

Although Tidworth is a larger town than Ludgershall, we are a small but faithful congregation, and this is reflected in our finances. We have been able to meet our share but being small and consisting of mainly those on fixed incomes, we depend a great deal on our fund-raising activities and money from church fees and hire of church hall.



Statistics taken from our parish Spotlight Dashboards ; please note these are based on census data taken in 2021. Note that Tidworth has a sizeable Gurkha population.

3 | Our Current and Future Ministry Team



St James Pudding night and below Carol Service at St James

Our current ministry team currently looks like this:

Revd Dr. Peter Howson.
Revd Wenda Rioch.

All have ministered for many years in this locale, reaching people outside the walls of the church building on those other six days of the week! Revd Peter is a retired Methodist minister and was an Army Chaplain who brings valuable insight on the military side, Revd Wenda is a retired CofE minister with wealth of experience gained from her many parishes.

Lay Worship Leaders

Mrs T. Edwards.
Mrs Julie Walker.

As a Benefice we run a pastoral visiting team, visiting anyone who needs us in both towns.

Lay Pastoral Assistants

Mrs Tina Edwards.
Mrs Jane Howson.
Mrs Julie Walker.
Mrs Lucy Venn.

The new Rector of our Benefice would have the opportunity to pursue the possibility to recruit a House for Duty Priest or youth worker to support the ministry in Ludgershall and Tidworth. The vicarage situated behind Holy Trinity, which is occupied at present, could be the considered residency for this post.

“I like the informality and helpfulness and genuine feeling of care.”

4 | Who are we? - St James

Welcome to St James Church, Ludgershall and Faberstown.

We are a small and inclusive church family of about 60 regular attenders, based in semi-rural Wiltshire. A broad church composed of all ages from a variety of walks of life, we bring our different gifts together in our worship of Christ and in our service to the wider community in which we live. Much of our worship was traditional and conservative in style. We have changed a lot in the last 5 years. We used to be an ageing congregation, but more recently we have attracted a more balanced composition of couples, families, children and young adults. We have recognised the need to ensure there is a suitable way for all groups to join in our congregation of the Word and the Eucharist. We have been challenged to find ways of worship to learn in age-appropriate ways but still enjoy being together as the whole body of Christ.

We have a wide range of denominational backgrounds represented which reflects our awareness of being the only local parish church in Ludgershall and our thoughtful but subtle approach to adjusting our worship to be accessible to all. We are a hugely welcoming and friendly fellowship which also helps smooth the way for those less familiar with Anglican ways to find their place within our church family.

We offer the opportunity to join us at a very exciting time: we are growing in faith and number, and people in Ludgershall & Faberstown are looking towards the church for the first time in a generation. This gives us renewed opportunity to share the Gospel here and grow new faith. We have a number of lay members actively working on ministry initiatives in the town we are open and ready to be led by the Spirit and our new Rector in continued future growth.

We also offer you the challenge and opportunity to join us at the coal-face of living the Christian life. Despite the beautiful countryside surroundings, we know many people in our wider community struggle. Life is not always easy. We acknowledge our mission here to be to bring the light of Christ to bear in every situation, and we are excited to welcome a new member to our team.



Music night at St. James

***“St James is a wonderful parish church.
I love the historic building coming to life through
prayer and praise.”***

***“An oasis of calm and spiritual renewal
in a busy world.”***

5 | What do we do? - St James

WEEKLY DIARY	
SUNDAY 10AM HOLY COMMUNION WITH CHILDRENS CHURCH WORD SERVICES WITH CHILDRENS CHURCH OR WORSHIP WORD AND SONG. 4 OR 6PM EVENING SERVICE	THURSDAY 8.30AM MORNING PRAYER 10.30AM SAID COMMUNION
MONDAY 8.30AM MORNING PRAYER 7.30PM TOWER BELLRINGING	FRIDAY 8.30AM MORNING PRAYER COMMUNITY CAFE SEASONALLY, LENT LUNCHEAS
TUESDAY 8AM MORNING PRAYER 9.30AM STEPPING STONES TODDLER GROUP 1.30PM SCHOOL ASSEMBLIES BIBLE STUDY HOME GROUPS	SATURDAY MONTHLY WALKING GROUP SEASONALLY, BIBLE STUDY COURSE
WEDNESDAY 8.30AM MORNING PRAYER BIBLE STUDY HOME GROUP	SPECIAL EVENTS LIVE MUSIC NIGHTS, ST JAMES FUN DAY, QUIZZES, MAY PLANT SALE, FLOWER FESTIVAL, RIDE AND STRIDE WALK, PUDDING NIGHTS, HARVEST SUPPER.



Womens Breakfast and a Harvest picnic in Savernake forest

THE BENEFICE OF LUDGERSHALL & TIDWORTH

Worship

We have recognized the need to ensure there is a suitable way for all age groups to join in our celebration of the Word and the Eucharist. We have been challenged to find means to worship and learn in age-appropriate ways but still enjoy being together as the whole Body of Christ.

We nurture the young and their families through baptism, we encourage the exploration of their faith when children are old enough to own it for themselves through admission to communion (7 years and up) and on to confirmation as young adults or in adulthood. And we visit the elderly and infirm who are unable to join our Sunday worship.

At the younger end of the scale, each of our children's groups is still small, but the engagement of our youngest members is already helping to spiritually nourish the older members and vice versa. However, there is still a strong need for better engagement with the teenaged/young adult age group, possibly outside of the Sunday worship timeslot.

Castledown FM Radio

We have a weekly radio slot (10am) which is essential to our outreach. It's a slot where we regularly work to bring an upbeat service to our community. This opportunity came via Covid; a new world opened up for us and we can now reach more people in our locality, bring Jesus into the home of our community.

Adventure with Hymns

As a congregation we wanted to learn new hymns and worship songs. We introduced Adventure with Hymns where once a month after Sunday coffee we sang together in the church hall new hymns and songs. This has led to the introduction of a new songbook which sits alongside Ancient and Modern.

Prayer Group

Using the technology of WhatsApp we have a dedicated group who react immediately to prayer requests. We have found our prayer group is a powerful way to support one another and to lift their needs and hopes to God.

Learning

In addition to church services, we offer regular opportunities for everyone to learn. This extends through our pre-school toddler group to our weekly and fortnightly Bible Study Home Group for adults who want to deepen their Bible knowledge, as well as seasonal courses on chosen themes.

Fellowship and Belonging

As our number has grown, the number of fellowship opportunities has risen. We have long standing and accomplished Bell Ringers, we have a monthly walking group, a community café which meets in our church hall each Friday as well as our regular seasonal events which brings church and non-church folk together and also raises much needed funds.

Our congregation works hard to support the church's endeavours: making coffee, welcoming and reading, cleaning the church and hall, leading prayers and teaching our children and young people.

Women's and Mens Breakfast

St James has both a women's and men's breakfast which meets monthly in our Church Hall. This where we can make new friends, and enjoy a special time together. Both ministries enhance lives by promoting spiritual growth and building a strong community and support among participants.

Ministering to our Wider Community

We offer space, activities and a time to talk to support some of the more vulnerable in our society. Notable in this category are Stepping Stones, a stay and play group for babies, toddlers and pre-schoolers and their parents or carers, and a memory support group for dementia sufferers and their carers.

Something new: Christmas 2024 at St James - 'A Posada'

Our posada went from homes to businesses in Ludgershall commemorating the journey that Joseph, Mary and the donkey made from Nazareth to Bethlehem in search of a safe refuge where Mary could give birth to the baby Jesus. Joseph, Mary and the donkey arrived at St James on Christmas Eve for the crib service.

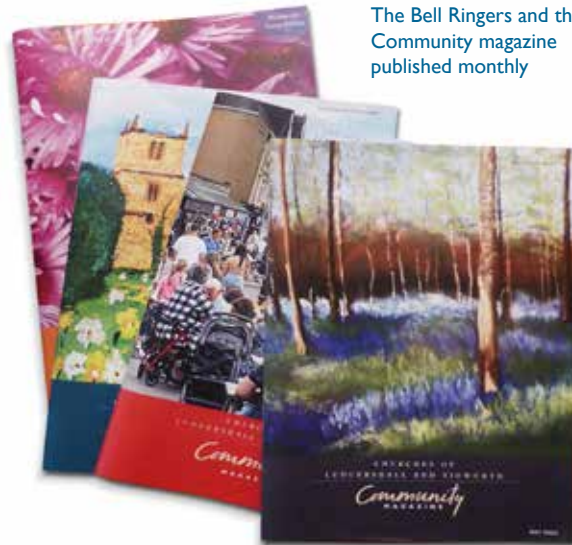
"The services reach out to the oldest and youngest members of the church."



The Bell Ringers and the Community magazine published monthly



Churchyard maintenance, Preschoolers watching the Eucharist closely and singing around the Easter fire



6 | Our Church - St James

Our church building was built in the 13th Century, and contains many beautiful features, well used in our worship: A Norman font; a bell tower with a ring of 6 bells; a simple nave, chancel and Sanctuary limewashed with carved stone features; a fine Walker organ housed in the north transept; a small chapel in the south transept known as the Brydges chapel on account of the ornately decorated tomb of Sir Richard Brydges (1500-1558) and his second wife Lady Jane Spencer (ancestor of Lady Diana). The East Window of this chapel has been subject to the design and installation of a new contemporary stained glass window by artist Sophie Hacker, an amazing project the Parish as a whole is very proud of. The design of this new window centres on the past, present and future of Ludgershall and Faberstown under the kingship of Jesus.

Across the churchyard from the Church itself is our Church Hall building, completed in 2008. Containing a large ground floor hall space, a smaller upstairs meeting room plus kitchen, toilet and baby changing facilities, the Hall is used for a wide range of activities and ministries for all ages. It is available for hire during time when the church is not using and is used extensively by our wider local community.

The churchyard itself is closed to new graves, though those who already own family plots can still have ashes buried there. Other burials are conducted at the Ludgershall Cemetery, a short walk away on Dewey's Lane. The churchyard is maintained by a local contractor and by church working parties, partially funded by the county council and the local town council.

The Rectory at Ludgershall is across the road from the church and consists of a large family home with garage, excellent driveway access for two cars and extensive garden. The layout of the home allows access to the rector's study/office without excessive intrusion to home life in the rest of the house.

For quite a small place, we have a lot going on!



The new contemporary stained glass window by artist Sophie Hacker

“The church provides a continuous link to my childhood.”

“It is where I can be at peace and say my prayers.”

“It’s nice having the church open for silent prayer.”

7 | Who are we? - Holy Trinity

A Warm Welcome from Holy Trinity Church Tidworth

We are a warm and friendly congregation of about 15 who welcome everyone whether local or from further afield to our services, other events and activities. We are a mixture of ages with some young families.

We are prayerful people, and we believe God is at work both within and outside this church. We seek to be rooted in the command to love God, and love our neighbours, and we feel that to be a true expression of God's love requires us to take risks, do new things and spot opportunities for God to use us in His service. We understand that vision to take us far and wide outside the membership of the Church.

Tidworth is continually changing, vibrant, and energetic. A large quantity of new housing has been built to accommodate both the growing civilian population and the rebasing of military families into the area. We recognise the need to reach out to a substantially divided and deprived community. In the past the military portion has been very fluid with families reposted every 2 or 3 years, but the current expansion is intended to form a more settled community of military personnel. This offers a new exciting opportunity for ministry.

As a congregation we want to unite the community, so people see the church as being at the heart of things. We want our church to be seen not only as a familiar backdrop to life, but relevant to whatever life throws our way, providing welcome, care and a practical word of the love of God.

We are a church with a heart for social action and meeting the needs of the wider community. We use our resources such as our hall as a safe space to directly reach and support the vulnerable in our society. We need someone who will help us continue to build a strong link between our community, schools, army and church and help our church expand and grow.

We are currently reflecting on our/God's mission for the future in Tidworth. Having recently joined in with the Thrive Learning Communities, we are just starting to get a sense of what this might be.



Holy Trinity church exterior and a Christmas wedding

8 | What do we do? - Holy Trinity



Worship

Our main service is the Eucharist celebrated every other week at 11.15am. We have a close relationship with the Army, and welcome numerous families every year through baptism.

A regular team of members from the congregation helps in church as servers, readers, sidepersons, intercessions, flower arrangers, cleaners and coffee makers. Coffee is currently served before the Sunday service in the Hall.

Learning

We have in the past held regular home Bible studies, which are sorely missed, so we would like to relaunch these, with some support from our new Incumbent.



Remembrance Service: Church exterior; Church entrance and Christmas Crib

Fellowship and Belonging

We are a small but committed fellowship at Holy Trinity, and we make a point of being there for one another, a deep care underpinned by our shared faith.

The heart of our current weekday ministry is the Toddler Group we run in our church hall on Monday afternoons. This group is run by several committed members of the congregation. The group is open for all parents, carers and preschool age children, providing space to play and a welcoming (hot!) drink.

Ministering to our Wider Community

We are keen to connect beyond our regular members, to our wider community. We contribute regularly to the monthly Community Magazine and it is sold in the church and around the local area. Our Facebook page has proved a useful and popular means of outreach.

We run a Nativity Trail via the windows of our local shops and businesses which has enabled a connection to families and embraces the whole community. We have strong links with the local Town Council where our input is appreciated. We work very hard to support Town Council events by providing free activities for families, so we are always busy!

In the past there have been church parades for the Scouts & Guides of the town. This link now seems ripe for renewal because new members of St James', Ludgershall now run a number of the groups in Tidworth.



Churchyard maintenance group, the Toddler Group poster, coffee in the church hall and Sunday worship;

9 | Our Church - Holy Trinity

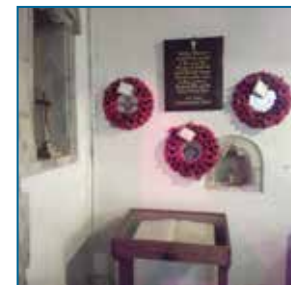
The Church

Our church building is a 13th Century Grade II listed building, with a beautiful late 12th Century stone font set beneath the tower. The very distinctive feature is the Tidworth War Memorial which takes the form of a Rood Beam of oak, erected in 1919 in memory of those who died in the Great War. There is a Maton Monument and a Monpesson Monument in the graveyard. In the tower there is an impressive board which depicts the previous incumbents dating back to 1297.

Church Hall

Directly opposite the church is our church hall, built in 2008 in conjunction with a deal made when the new houses were built in front of the church. It has a kitchen, disabled access and gas central heating.

We use the hall as a primary asset in creating a safe space for the vulnerable in our town. As well as the usual PCC meetings, jumble sales and coffee mornings, we run a toddler group on Monday afternoons and host the AA meetings on Wednesday evenings. Every other Thursday evening we host Age Concern Fitness and Friendship Club. The hall is also available for hire to the local community and is used extensively.



Above: Our beautiful set of bells, awaiting a new generation of new ringers; the font lid; the church hall, taken from the church; the 12 Century font.

10 | Our Greatest Challenges

As we move forward, we are very aware of the challenges we face:

- **Attracting more families to our membership**

Our work with toddlers and schools outside of Sunday worship is all part of our overall strategy to ultimately enable whole families to join us, so we offer something for everyone. But we are not there yet...

- **Encourage teenagers**

We would like to try to address some of the social problems in our community including drugs and street violence amongst teenagers. We'd love to be able to offer something to get our young people off the streets and give them something to believe in.

- **Five Primary Schools in Ludgershall and Tidworth**

How can we engage more effectively with them all? They all seem keen to engage with us, but we currently don't have the capacity to make the most of these opportunities.

- **Ministry to older people both within and outside the Church**

Support members of our Church who have faithfully supported us over the years but are now house bound.

- **The Young Ones**

Encourage young people to know Gods' love.
So please come and join us.

"Our church is a welcoming place for all - which results in us being diverse but united by faith - old and young, single and married, gay and straight - there is space for everyone."

***"Greatest challenge?
To reach out further into an ever-growing community."***

"I'd like to see the church full of families learning and worshipping together."

"I'd like to see the church not seen as a separate entity but practically there for all - we are getting there!"



The Angel Gabriel (left), Mary and Joseph (right). "Mary Says Yes, I am the handmaid of the Lord."

|| | Who are we looking for?



The laity working with our youngest members

Person Specification

The Rector will need four key qualities.

A clear communicator:

As a benefice, we are trying to learn our faith better and mature in our understanding. Over the last three years the Making Jesus Known Campaign has helped us to refocus our attention in really getting to grips with what it means to be a Christian. As a congregation, we are all at different stages in our walk, but it is clear that we need to continue to grow in knowledge, and therefore we are looking for someone who can teach clearly week by week from the Bible.

Deft and perceptive leadership:

We are growing parishes with big aspirations, we take on the priorities that come at us from the world, from the Diocese and Deanery. We advance in practical ways, with our self-imposed ideas and projects. We are looking for someone up for the challenge of leading us and taking off the brakes to Make Jesus Known in our town and wider community.

Approachable and out and about:

We have started to look outward into our communities, to do the simple things like talk to folk in the street, visit new residents moving in, and develop these seedling relationships to appoint where we can invite people to church. This has caused the very beginning of a sea change in our town in which the town is now looking to the church, rather than shying away or thinking that the church wouldn't have anything relevant to say. We are seeking a new priest with the pastoral skills to maintain the progress made and increase our ability to build genuine relationships throughout our town community through which we can shine the love of Jesus Christ.

Supportive of lay ministry:

The last few years have been exciting times for us and we have led to a number of new ministries being launched by members of the lay congregation, but with substantial support from the previous incumbent. We are seeking someone who can continue to support these fledgling efforts into maturity, so they can become more self-supporting part of 'business as the usual' of St James and Holy Trinity.

12 | Appendix 1: The Rectory

Ludgershall Rectory

10 St James Street,
Ludgershall,
SP11 9QF

A large house in a spacious garden with gated driveway with room for at least 2 cars, a stones throw away from St James' Church and an easy walk to the town shops and amenities.

Accommodation comprises

At ground floor:

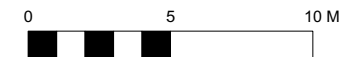
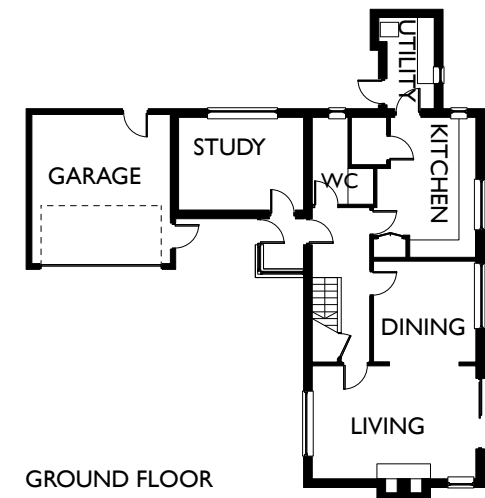
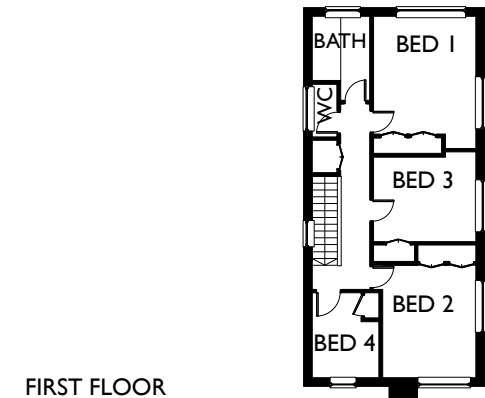
- Large kitchen over looking the back garden
- Large L shaped dining area and sitting room with patio doors. The sitting room has a hearth for an open fire.
- W/C Shower room
- Separate Utility including boiler. Boiler is oil fired as there is no mains gas in this part of the town.
- Study, most often used as the Rectory Office, directly next to the front door of the Rectory and accessible without entering the main house.
- Garage.

At first floor:

- 3 double bedrooms with integrated wardrobe cupboards. Bed 1 & Bed 3 have wash hand basins.
- 1 single bedroom, also with an integrated wardrobe.
- A family bathroom with bath and basin.
- Separate W/C.



From top; view from driveway entrance; front garden leading to rear gardens; rear of the house with left to right, sitting, dining and kitchen windows and three double bedrooms at first floor.



13 | Appendix 2: Information about services/worship/regular commitments

Average Sunday Attendance 2024

Location	Type of Service	Average Attendance (Adults + Children)
Ludgershall	Parish Communion	35 + 10
	Evening Service	6
	WWS	34 + 10
	Thursday Communion	5
Tidworth	All Age Worship (not currently taking place)	15 + 4
	Parish Communion	15 + 1

Occasion Offices 2024

Ludgershall	
Baptism	6
Marriage	3
Funeral	14 plus 4 additional crematorium services
Tidworth	
Baptism	9
Marriage	4
Funeral	1

Christmas 2024

Ludgershall	
Carol Service	57 + 5
Crib Service	52 + 30
Midnight Mass	54
Christmas Morning	33 + 7
Tidworth	
Lessons & Carols	32
Crib Service	33 + 5
Midnight Mass	30 + 1

Easter 2024

Ludgershall	
Palm Sunday	39 + 6
Maundy Thursday	12
Good Friday	10
Easter Day	54
Tidworth	
Palm Sunday	11 (non-Eucharistic)
Good Friday	0
Easter Day	21

Regular commitments for the Rector

Ludgershall

Weekly:

- Community coffee morning club (Friday),
- School Curriculum Bible Reflections
- Midweek communion (Thursday morning),
- Mums and Tots (weekly Tuesday) when available
- Bible Study
- Contribute to the local radio station Castledown Radio

Monthly:

- School assemblies
- Attend various council meetings when available

Additional:

- School Governor Castle Primary School
- Trustee of the Ludgershall Scouts Hall.

Tidworth

Fortnightly on rotating pattern:

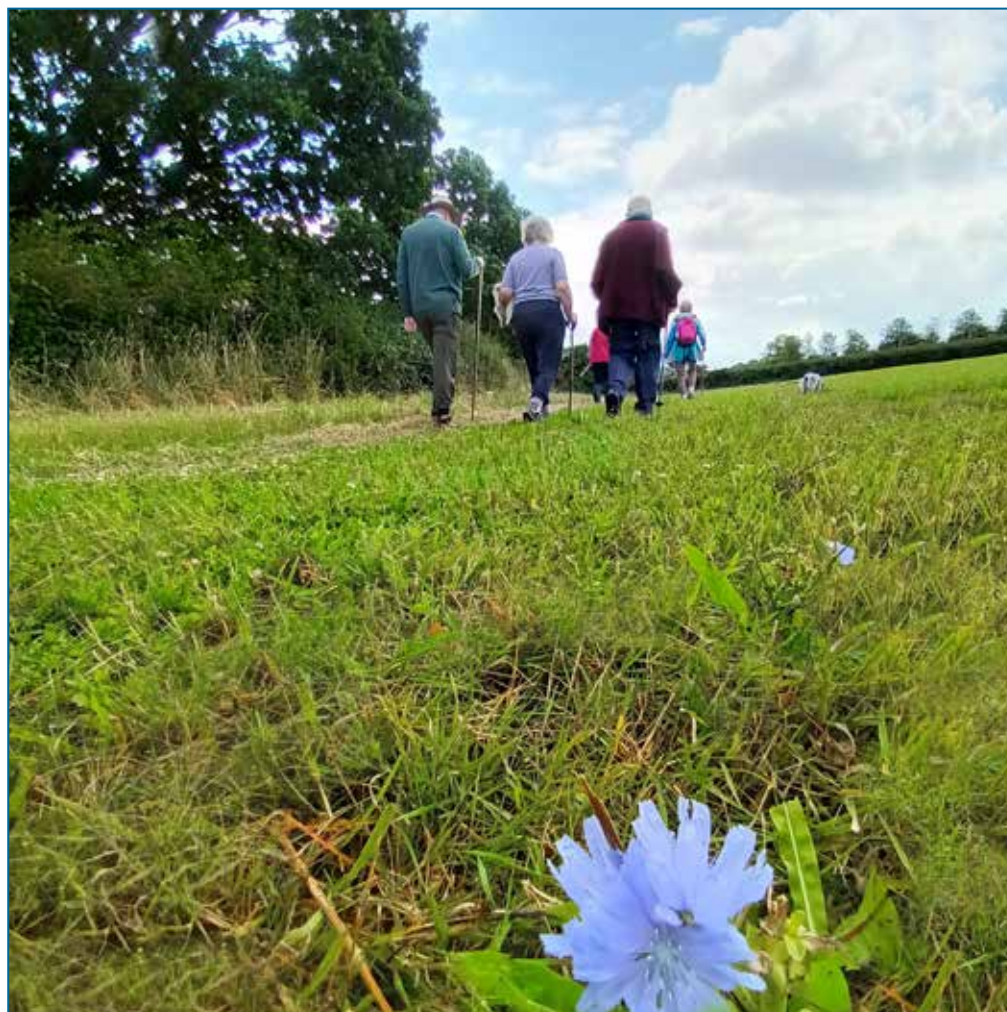
- Choir practice
- Bible Study

Monthly:

- Holy Communion at the sheltered housing in Trinity House
- Council meetings (though a PCC member has been sustaining this link during vacancy and may wish to continue).

Additional:

- Holiday Club for children over the summer holidays
- Hosting visits from schools eg to explore what Communion is
- Attendance and Spiritual input at Toddler Group especially at Easter, Christmas, Harvest etc.



The St James walking group.