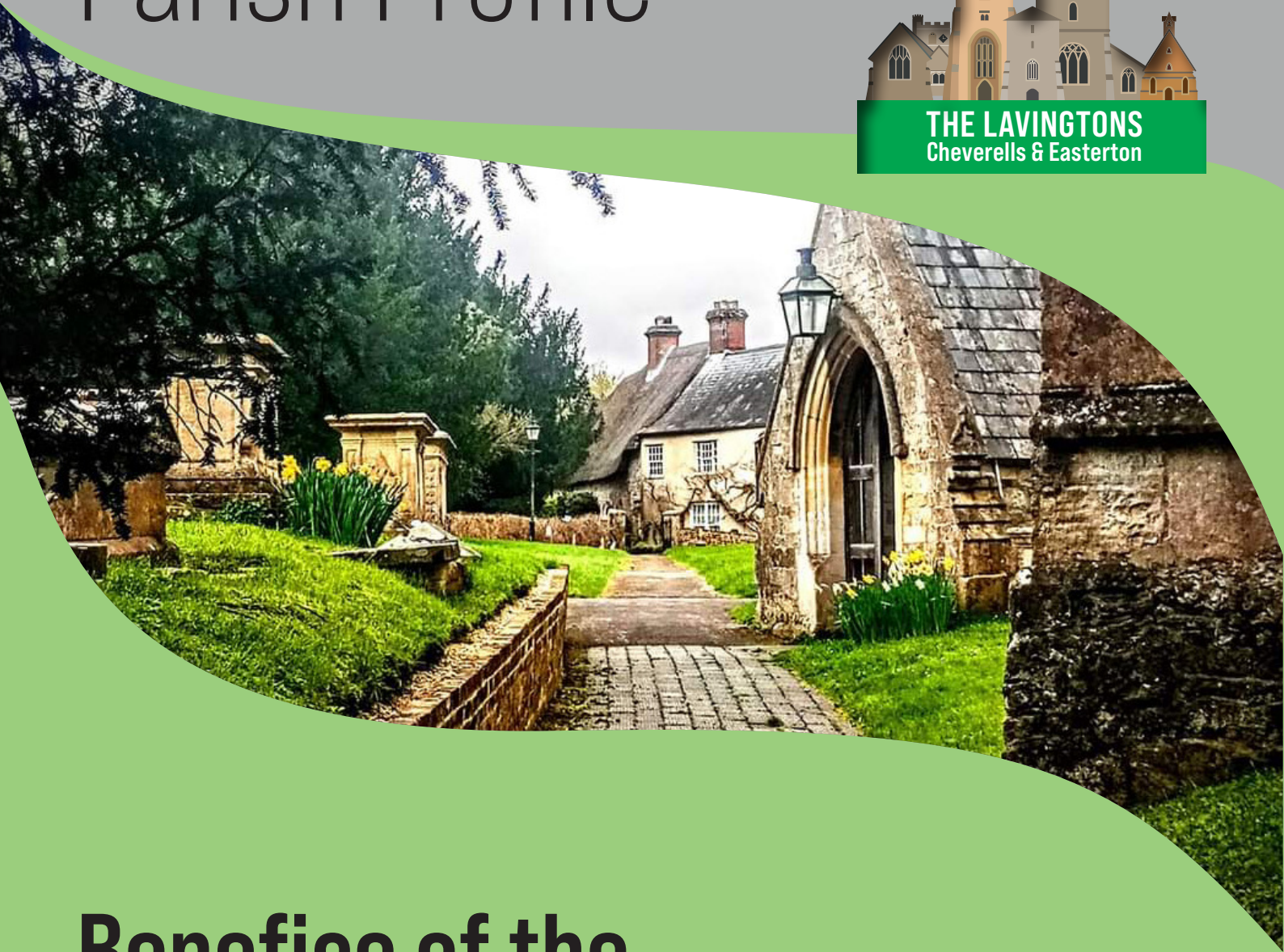


# Parish Profile

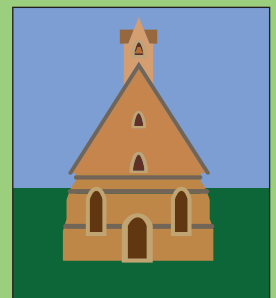
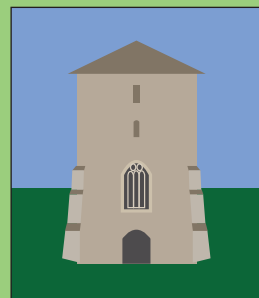
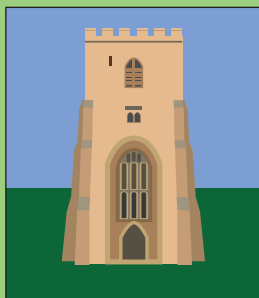
THE BENEFICE OF



**THE LAVINGTONS**  
Cheverells & Easterton



## Benefice of the The Lavingtons The Cheverells & Easterton







Welcome to Our Diocese	3	Patron Support & Community Facilities	24
Welcome to Our Deanery	4	Our Vicarage	25
Welcome to Our Benefice	5	Vacancy Prayer	26
Our Vision	6		
Our Priorities	7	<b>APPENDICES</b>	
Our Churches	8	<b>Appendix 1. Person Specification</b>	<b>27</b>
Our Community Engagement	10	<b>Appendix 2. Our Parishes</b>	<b>28</b>
Our New Priest	11	<b>Appendix 3. Financial Status</b>	<b>29</b>
Responding to Challenges	12	<b>Appendix 4. Service Patterns</b>	<b>31</b>
Where We Are	14	<b>Appendix 5. Occasional Offices</b>	<b>33</b>
Who We Are	15	<b>Appendix 6. PCC Membership &amp; Meetings</b>	<b>34</b>
Pastoral & Ecumenical Work	16	<b>Appendix 7. Safeguarding</b>	<b>35</b>
Community Outreach	17		
School, Children & Young People	18		
What We offer	20		



# Welcome to our Diocese

THE BENEFICE OF



**THE LAVINGTONS**  
Cheverells & Easterton



## Welcome!

Thank you for your interest in the post of Rector of the Lavingtons, Cheverell and Easterton: part of the See of Ramsbury in the Diocese of Salisbury. This is a super opportunity for flourishing rural ministry in one of the most attractive parts of Wiltshire. There is great local appetite here for mission and growth, with supportive volunteers and a promising future.

I am looking for devoted and visionary clergy, who can inspire and lead our churches in Making Jesus known - our new diocesan vision. While this can appear a timeless landscape, our parishes are constantly changing and face all the challenges and opportunities of life in the 2020s. Because of this, the church must renew its mission and traditions for the contemporary situation.

In the Diocese of Salisbury, we place a high value on the encouragement and pastoral support of our parish clergy and, should God guide you to serve here, you will become part of a committed and collaborative team.

Please contact the Ramsbury office if you need any assistance with your enquiry and be assured of my prayers as you seek the Lord's will for your future.

*Sincerely in Christ,*





# Welcome to our Deanery

A very warm welcome to you as you discern your calling to join the Church of England ministry within the Deanery of Devizes.

The Deanery encompasses a rich tapestry of town and village churches, and though each has its own unique character, we seek to unite around a shared commitment to mission and ministry.

Our Deanery Strategic Plan (2021–2026) aligns with the Diocese of Salisbury's new vision of Making Jesus Known, as we seek to deepen discipleship, grow younger and more diverse congregations, and reimagine ministry in creative and sustainable ways.

Our Plan is a living strategy shaped by prayer, discernment, and Synod discussions, respecting the unique identities of our benefices while fostering collaboration. Though the Covid pandemic and its lingering impact, especially on rural parishes, coupled with a number of recent local vacancies has limited the delivery of the Plan, within the Deanery there remains a desire to collaboratively implement it.

## Central to this plan are four key Strategic Actions:

**Children & Young People (CYP):** We recognize the urgent need to engage with young people, going out to meet them where they are rather than expecting them to come to us. Our collaborative approach includes schools ministry, and partnerships with Wiltshire Youth for Christ.

**Finance:** Many of our churches face financial challenges, and our Deanery Finance Strategy Group (DFSG) provides support by helping churches assess their financial situation, share resources, and explore creative ways to sustain ministry effectively.

**Community Engagement & Presence:** The pandemic has reinforced the importance of being outward-facing in our ministry. We are committed to strengthening community engagement, developing cross-boundary ministries, and reimagining how we serve beyond our church buildings.

**Buildings:** Our historic church buildings are both a blessing and a challenge. We aim to move beyond mere maintenance and instead focus on how these spaces can further God's mission.

We believe in a mixed ecology of church, where different expressions of worship and community life flourish. Whether through traditional parish ministry, fresh expressions of church, or new forms of collaboration, we seek to grow as a church of missionary disciples, responding to God's call to reach a younger and more diverse community.

As Rural Dean I have supported this Benefice through their vacancy and I have witnessed first-hand much that is encouraging. Though the last incumbency brought with it numerous challenges, the church families have bounced back, and remained faithful and hopeful. What they have achieved collectively whilst in vacancy is testament to their faith, desire to rebuild afresh, and to wanting to make Jesus known.

As you consider joining us, we invite you to bring your gifts, vision, and leadership to this evolving landscape of faith. Here, you will find a community of clergy and laity eager to support, encourage, and grow alongside you in this shared journey of discipleship.

*May the Holy Spirit guide and bless you as you seek where God is calling you to serve.*

Rev Dr Keith Brindle  
Acting Rural Dean of Devizes Deanery



# Welcome to our Benefice

THE BENEFICE OF



**THE LAVINGTONS**  
Cheverells & Easterton



## Welcome to our Benefice

Welcome to the Benefice of the Lavingtons, Cheverells and Easterton. This profile tells you all you need to know about us, our community and the work we, as God's people, are doing across the Benefice. It also describes the new Priest we are seeking. Could it be you?

We are a faithful, welcoming and supportive Benefice set in the beautiful Wiltshire countryside, embracing the villages of Market Lavington, West Lavington, Great Cheverell, Little Cheverell, and Easterton. In previous years, our five churches were the spiritual heartbeat of these communities, offering places of worship, fellowship, and service, though over the last incumbency we have undergone a decline in relationships and relevance.

We look to the future hopeful, trusting in God, seeking to grow in faith, to rekindle and deepen our engagement with our villages, and to share the love of Christ in all that we do.

As part of our future, we will work with you to discern and implement what God is calling us to be and do.

Comment from an older member of the congregation:

*"This is the first church where I felt really at home – it was like stepping into a warm bath of love and support. I feel exactly the same now as I did the first time I came in 1985"*





**THE LAVINGTONS**  
Cheverells & Easterton



We long to grow deeper in our own faith as followers of Jesus, to bring others into a genuine and personal faith with Him, and to see our lives and communities changed as a result.

We recognise the challenges of changing village communities, a decline in church numbers, and an aging congregation. The last few years have left many in need of healing and restoration. Financial challenges, including paying our Parish Share, are real but not insurmountable - we have done so in the recent past, and feel, under new leadership, we can soon do so again.

We face these challenges head-on, trusting in God and with a collective determination to work together. We believe that through prayer, renewed mission, and a willingness to adapt, we will strengthen our churches and grow in faith and outreach.

We believe the work and challenges ahead of us require faith, collaboration and the visionary thinking needed to appreciate our heritage, recognise the realities of our current position, and embrace growth with enthusiasm. Our diverse church community is eager to develop new approaches to faith and mission, facing the changes ahead with creativity and commitment.





# Our Priorities

THE BENEFICE OF



THE LAVINGTONS  
Cheverells & Easterton



- **Acceptance:** We are a welcoming and inclusive Benefice, valuing diversity as a strength. We aim to be a home for all, embracing people of every background and age, whether lifelong churchgoers or those just beginning to explore faith.
- **Evangelism:** We are committed to sharing the good news of Jesus Christ, both within our church family and in the wider community. We seek to nurture faith through biblical teaching and to be a light in our villages, offering hope and truth where it is most needed.
- **Mission:** We want to be known for showing Jesus' love in practical ways. Our churches are already active in their communities, and we hope to develop imaginative and relevant initiatives that serve the needs of our villages.

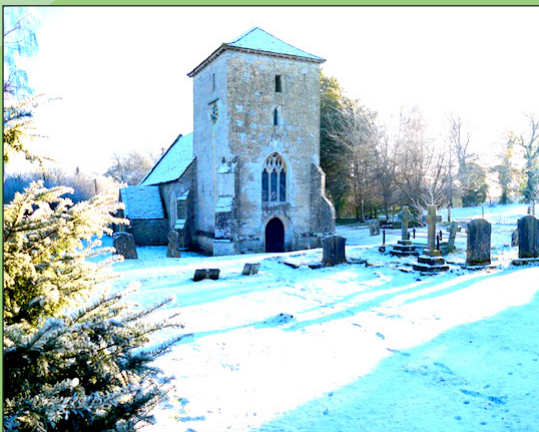
## Lavington School Subject Lead for Child Development:

*"We were delighted to have the opportunity this year to have our Child Development students have the virtual babies – It is something we have been keen to join in with for some time, so there was a great deal of excitement among the students. The Mothers' Union team provided fantastic support with the set up, delivering lessons to the two classes and weekly support in giving out and collecting the virtual babies – it is a huge undertaking for one person, so their support in this was amazing. The students really valued the opportunity and the results were varied and interesting to see. The students learned the value of parenting and the time, skills, effort and support needed to look after a baby. Would highly recommend the project to other schools or community projects. Looking forward to next year!"*

THE BENEFICE OF

# Our Churches

**THE LAVINGTONS**  
Cheverells & Easterton



Each of our churches has a unique character, yet all share a deep sense of worship and belonging. We have a variety of services, from traditional Book of Common Prayer (BCP) to more informal, family-friendly worship. Music plays an important role in our life together, and we are blessed with a talented organist and choir.

*(For more details about our individual Parishes Appendix 2)*





THE BENEFICE OF



THE LAVINGTONS  
Cheverells & Easterton





THE BENEFICE OF



**THE LAVINGTONS**  
Cheverells & Easterton

# Our Community Engagement



*"I really enjoyed today's service.  
It's a pleasure to come to church  
where everyone is friendly.  
Lovely hymns too."*

*"I just want to say, what an absolute  
delight it was for us to be with  
our young grandchildren at Little  
Cheverell's perfectly magical  
candle lit Crib Service."*

*The obvious joy and wonder  
of the many children in the  
imaginatively decorated church  
was unforgettable."*

*"Really enjoyable day. Lots of fun –  
my 4yr old really enjoyed himself."*

Our churches are involved in serving their communities. We have good and growing links with our local Church of England primary schools, where we are involved in collective worship and pastoral care. Through our partnership with Wiltshire Youth for Christ we provide mentoring and support to students at Lavington Secondary School. We also work alongside village halls, social groups, and charities to support those in need. Events such as village fetes, coffee mornings, and concerts provide valuable opportunities to connect with people beyond our regular congregations.

*"Just wanted to say how lovely the Church has looked and  
how the services this December have really helped 'make'  
our family's Christmas"*

*"I visited this church today and took the liberty of playing  
the organ. How wonderful to be able to do this."*

*"I came to church here as a child and had forgotten, until  
now, how lovely this small church is."*



# Our New Priest

THE BENEFICE OF



**THE LAVINGTONS**  
Cheverells & Easterton



## Our Parishes would love you to:

- ➔ Provide spiritual leadership and inspire us in our faith journey.
- ➔ Have a pastoral and caring heart, sensitive to the healing and restoration needs of those in our church family and beyond.
- ➔ Work collaboratively with our lay teams, encouraging and empowering them.
- ➔ Engage with people of all ages, including families, young people and the elderly.
- ➔ Continue to strengthen our links with local schools and community groups.
- ➔ Embrace both traditional and fresh expressions of worship.
- ➔ Encourage and guide us in implementing the mission and evangelism initiatives we have begun.
- ➔ Help us navigate and overcome the challenges we face, including the financial pressures and changing dynamics of our villages.
- ➔ Enjoy living in this beautiful rural setting and be an active presence in our villages.

*(For a comprehensive Person Specification Appendix 1)*

We offer a friendly and supportive church family, a stunning environment in which to live and minister, and a real enthusiasm for working together to build God's Kingdom.

If you feel called to join us, we would love to welcome you.



THE BENEFICE OF



**THE LAVINGTONS**  
Cheverells & Easterton

# Responding to Challenges



## Our Benefice

Our Benefice is a small but faithful community, committed to serving God and our villages despite our limited resources. We recognise that rural ministry comes with challenges, but we trust in God's provision and are determined to grow in faith, unity and outreach.

We desire to be at the heart of our villages once again, broadening and deepening our relationships within the community. We long to make the love of Jesus relevant and real, ensuring that our churches are not only places of worship but also centres of life, support and hope for all who live here.

## Strengthening Benefice Unity

With five parishes, each with its own identity, we acknowledge the need to

work more closely together. Our numbers mean that collaboration is essential. Joint services, shared events and the development of a Benefice Council will help us support each other and reduce administrative burdens, allowing us to focus on worship and ministry.

## Engaging Younger Generations

Reaching younger people remains a challenge, but we are committed to building on our relationships with all of our local schools. With creativity and persistence, we hope to offer engaging worship and activities that make church life more accessible and relevant to young families.

## Supporting Rural Ministry

We serve a scattered rural community, and ensuring our ministry remains visible and accessible requires dedication.



We are blessed with committed Lay Worship Leaders, a developing Pastoral Care Team and volunteers who help sustain our mission. By encouraging lay involvement and sharing responsibilities, we continue to offer meaningful worship and pastoral care.

## Financial Stability

With limited financial resources (see Appendix 3), sustaining the missional life of our churches is a concern. We recognise the need to find new ways to support our Benefice, including forming a Benefice Finance and Fundraising Group. Encouraging generosity and engaging the wider community will help us continue our mission.

The maintenance of our historic church buildings is a financial challenge. While they are a treasured part of our heritage, they require ongoing repairs and modernisation. The responsibility of caring for multiple listed buildings adds to our financial burden, requiring careful planning and dedicated fundraising efforts to ensure they remain safe, welcoming and fit for purpose for future generations.

In addition to maintaining our buildings, we are committed to meeting our Parish Share contributions. By faithfully contributing, we want to ensure that ordained ministry

continues in our Benefice and that we remain part of a thriving Christian community.

However, maintaining our buildings and paying our Parish Share are not ends in themselves. They are the means to a greater purpose: to bring people to faith in Jesus Christ and to see lives transformed by His love. We are committed to ensuring that our financial priorities align with our spiritual mission, trusting that God will provide as we seek to grow His Kingdom.

## Enhancing Worship and Outreach

Our worship reflects the breadth of our faith, from Common Worship and BCP services to Breakfast Church and Welcome to Worship. Though we are small, we value our ecumenical partnerships, particularly with Trinity United Reformed Church (URC). We trust that by continuing to offer warm and welcoming services, we can reach more people and deepen our engagement with the community.

## Caring for Our Community

Many of our parishioners are older, and we see pastoral care as a priority. The newly formed Pastoral Care Team will offer Home Communion and support those in need. We also play a role in community initiatives like the Village Link transport service, Tuesday Club, The Hub and Friends and Neighbours, helping to combat loneliness.

## Growing in Faith

Though we face numerous challenges, we are strong in faith. We are looking for a leader who will walk with us, helping us grow spiritually and practically. With prayer, perseverance and a willingness to embrace change, we trust that God will guide us towards a flourishing future for our Benefice.

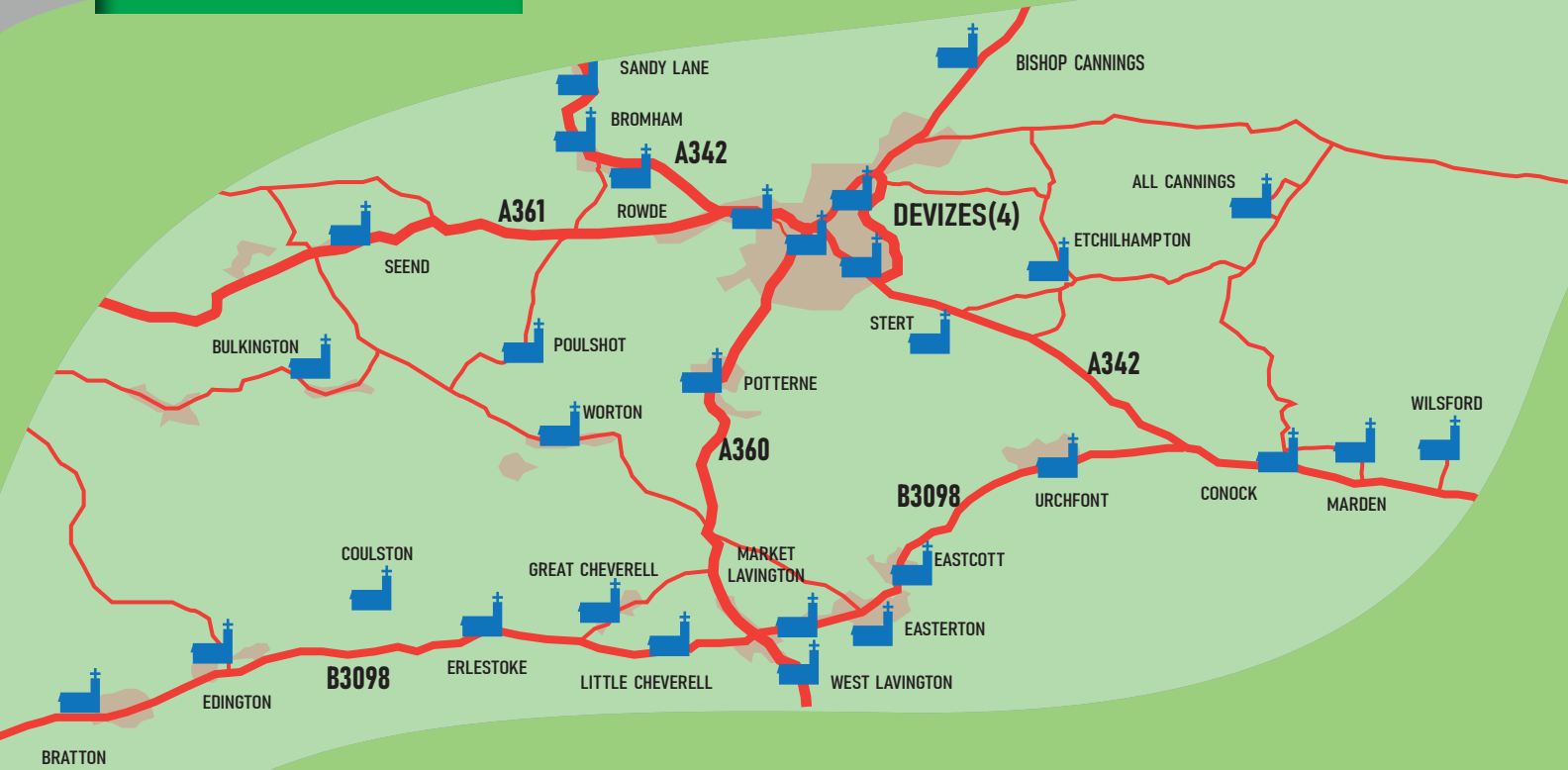






## THE LAVINGTONS

Cheverells & Easterton



Our Benefice of five churches is located on the northern edge of Salisbury Plain, covering the parishes of Market Lavington, West Lavington, Great Cheverell, Little Cheverell and Easterton. Formed in 2002, the Benefice spans a compact rural area with strong historical roots and picturesque countryside.

We are near the market town of Devizes, where many residents work, while others commute to Trowbridge, Swindon, Salisbury, or even London. The area offers scenic walking and riding paths, as well as numerous historic and ancient monuments.

### *Benefice Demographics taken from 2021 Census*

PARISH	POPULATION	0-17	18-64	OVER 65
Market Lavington	2045	376	1220	463
West Lavington	1333	385	624	327
Great Cheverell	595	105	367	128
Little Cheverell	160	33	70	59
Easterton	580	115	315	151
TOTAL	4713	1014	2596	1128
% of POPULATION		21	55	24



# Who We Are

THE BENEFICE OF



**THE LAVINGTONS**  
Cheverells & Easterton



The Benefice has grown in recent years with new housing developments in all villages. Each church historically developed its own worship style, but the COVID pandemic fostered a spirit of unity through online services. Since returning to in-person worship, bi-monthly Benefice Communion services have strengthened cross-parish fellowship.

Recent efforts to streamline Benefice administration have included joint PCC meetings, cross-Benefice collaboration and the establishment of a Benefice Finance and Fundraising Group. We are blessed with a strong team of Lay Worship Leaders, supported by an Associate Priest, to maintain regular services and events.

ATTRIBUTE	DETAILS
Total Population	~5,000
Demographics	50% working age, 50% split between young people and retirees
Military Presence	Serving and retired personnel residing in the Benefice
Congregation Base	Primarily local parishioners
Benefice Structure	Five separate PCCs, moving towards a unified Benefice Council



THE BENEFICE OF



**THE LAVINGTONS**  
Cheverells & Easterton

# Pastoral & Ecumenical Work

## From the Tuesday Club

*"It's the highlight of my week"*

*"The Tuesday Club is the only outing I have in a week"*

*"I enjoy playing Scrabble and chatting with other members"*

## Mothers' Union – thanks from Fear Free

*"..thank you so much for all those hand creams and craft items. The team were super excited to share these resources with their clients. The hand creams especially are really helpful as a calming tool in our group sessions with clients and as the schools are starting to go back, we are seeing more and more children who will love the books and other activities you gathered for them!"*

## Dauntsey House Care Home

*"..we really value our monthly in-house Holy Communion led by Rev'd Caroline. Not only do our residents thoroughly enjoy these engaging services, but also really value having an opportunity to nurture their faith and worship at home, whilst feeling part of a wider church community."*



INITIATIVE	DETAILS
Care Homes	Monthly Holy Communion at Dauntsey House & Market Lavington Care Home
Pastoral Care Team	A newly formed Pastoral Skills team, supported by an Experienced Lay Pastoral Assistant.
Home Group	Weekly ecumenical Bible study. Last year the group undertook the Mothers' Union Metamorphosis project
Ecumenical Prayer	Two groups meet, one weekly and one monthly, to pray for the Benefice
Alpha Course	Previously run in the Benefice, with future partnership with St James, Devizes, being considered



# Community Outreach

THE BENEFICE OF



**THE LAVINGTONS**  
Cheverells & Easterton



INITIATIVE	DETAILS
Mothers' Union	Growing membership, supporting 'Rise Up' campaign & Wiltshire Fear Free
Youth & Children	Well-established Benefice Children & Young People's (CYP) group. Some churches have partnered with Wiltshire Youth For Christ.
The Hub (Easterton)	Weekly community gathering for friendship, refreshments and entertainment
Friends and Neighbours (GC)	Monthly meeting for friendship and refreshments.
Tuesday Club	Lunch and activities for older residents
Village Link	Parishioners support transport service for medical appointments
Nestling Trust	Parishioners support this local registered charity which provides a safe home for destitute children and basic health care to remote villages in Nepal.

The Benefice is committed to community service, pastoral care and outreach initiatives.

While challenges remain, there is strong enthusiasm for strengthening unity and furthering mission efforts.





# Schools, Children & Young People



We are passionate about investing in children, young people and families, nurturing their faith, and creating strong connections between our churches and local schools.

## Children & Families in Church Life

Though we do not have children, young people and their families attending our regular services, in the Benefice there is a small, but faithful cohort who strive to create a welcoming space for them to grow in faith. Across the Benefice, we offer:

- ➔ **Family-friendly services** – including Christingles, Mothering Sunday, Easter celebrations and intergenerational events like the St Barnabas Christmas Tree Festival and Teddy Bear Parachutes.
- ➔ **Youth Support** – Weekly mentoring at Lavington School in collaboration with Wiltshire Youth for Christ, as well as the Mothers' Union Virtual Baby project, which supports students studying childcare.
- ➔ **Special Events** – Intergenerational activities, school-led prayer initiatives and support for confirmation and baptism preparation.



## Schools & Church Links

Our Benefice is blessed with five schools:

- ➔ **Lavington School** (Market Lavington, Secondary Academy, ~850 students) – A specialist maths and computing academy, with a re-opening 6th form in 2025. \*\*
- ➔ **St Barnabas CE Primary** (Market Lavington, ~100 pupils). A close-knit church school with nursery provision, where worship and Christian teaching is supported. \*\*
- ➔ **Dauntsey Academy Primary School (DAPS)** (West Lavington, ~200 pupils). A thriving primary school where links with the church are growing. \*\*
- ➔ **Holy Trinity CE Primary Academy** (Great Cheverell, ~150 pupils). A vibrant church school with strong engagement, including Lay led worship and a Eucharist preparation group. As a Hymnpact! School, connections between church and the community are made through singing.
- ➔ **Dauntsey's School** (West Lavington, Independent School, ~860 students). A boarding and day school with its own chaplain, with whom we maintain good relations.

\*\*Part of the EQUA Mead Learning Trust, an accredited partner in the Diocesan programme for Flourishing.

The Benefice-wide CYP School/Church Liaison Group has been active since 2020, ensuring each school has a dedicated church link and fostering joyful and meaningful engagement. Examples include Open the Book storytelling, reflection spaces and special festival services held in church.



## Wiltshire Youth For Christ-WYFC

WYFC has a long history of supporting youth and children's ministry in the Benefice. For over 14 years, they have led school assemblies, Collective Worship, Mentoring and RE/PSHE events in partnership with local clergy and churches.

Beyond schools, WYFC engages in detached and centre-based youth work, operates a mobile Pop-Up Youth Work van, and advocates for increased youth resources, including supporting the development of the new Youth Drop-In Centre in Devizes. They also offer training and partnership support for communities and churches.

## Hopes for the Future

Both staff and students in our schools have shared their hopes for our new priest:

- ➔ A visible and approachable presence who engages with children and families.
- ➔ Someone with a heart for children's perspectives and spiritual growth.
- ➔ A regular, committed partner in collective worship, school events and pastoral care.
- ➔ A leader who fosters collaboration, ensuring schools and churches continue to flourish together.

We pray for a priest who will build on the strong foundation of relationships already in place and help our churches continue to be places where young people feel welcomed, valued and encouraged in their faith.





ATTRIBUTE	DETAILS
Administrator	Part-time, 8 hours per week over 4 days
Clergy Support	Licensed clergy member contributing significantly to the Benefice.
Lay Worship Leaders	12 strong team leading services, preaching, and serving across Benefice
Pastoral Care	Newly formed team, supported by an experienced Lay Pastoral Assistant
Bell Ringers	Regularly ring at services and special events
Choir	No formal choir leader, but a group of singers for special services
Organist	Accomplished organist
Lay Ministry Training	One person in discernment for Lay Licensed Ministry
PTO	Provides a monthly service in Great Cheverell

## Benefice Strengths

- ➔ Supportive and engaged parishioners eager to help develop a flourishing Christian presence.
- ➔ Family-friendly community events led by the churches.
- ➔ Strong ecumenical links with Trinity United Reformed Church, St Joseph's Catholic Church and Ebenezer Baptist Church.
- ➔ Developing relationship with Dauntsey's School Chaplain.
- ➔ Convenient access to Salisbury for diocesan activities.
- ➔ Regularly published information on church services and activities in village magazines:  
News & Views, Market Lavington Magazine, Easterton Echoes Newsletter



THE BENEFICE OF



THE LAVINGTONS  
Cheverells & Easterton

# The West Lavington Remembrance Avenue Wreath Laying Service 2024



ALL SAINTS' CHURCH WEST LAVINGTON OPEN DAY  
**SATURDAY 9TH SEPTEMBER**

Do some things you've  
always wanted to do  
Parachute you  
from the church  
Climb

The Village Hall Committee and the PCC  
**Little Cheverell Harvest Festival**  
Sunday 9th October at 7.00pm in the Village Hall  
Tickets for the supper and a glass of wine £10.00  
This follows our traditional Thanksgiving Service in St Peter's Church at 6pm  
All demonstrations welcome  
Space is limited, so it's first come, first served - deadline September 30th  
Tickets from Virginia Haines on 01380 818280 We look forward to seeing you!  
Donations of non-perishable food for the Deaf Food Bank very welcome

St. Peter's Church, Little Cheverell  
**COFFEE MORNING**  
in our village hall on  
**SATURDAY, 18TH NOVEMBER**  
10.00 - 12.00

Come to our 'new look' village hall  
and enjoy meeting your friends  
over homemade cakes, coffee  
Donations for our cake and coffee  
tables will be appreciated  
There will be displays of  
handmade cards, coffee  
and a RAFFLE!  
Proceeds will go to the village hall

St Barnabas Church  
Easterton  
2024 Theme  
Films

Free Admission  
Children's Activities  
Raffle & Refreshments

Contact June Wright  
junwri@outlook.com

**NATIVITY SETS ON DISPLAY**  
St Peter's Church Great Cheverell  
Sunday 5th January 2-5pm  
Refreshments



For information or to lend us your nativity set  
please contact Vanessa on vareburn@btinternet.com  
or Nicola on 07824 397 111 or ncoupe@sky.com

All Saints' Church warmly invites you to join us  
in West Lavington Village Hall  
for tea, cakes and children's activities  
4pm - 5pm

**MOTHERING SUNDAY**  
Everybody Welc

St Mary's Church, Market Lavington  
Open Church with Organ music and Refreshments  
Saturdays 11th, 18th and 25th May, 2pm - 4.30 pm - with Cake Sale on the 25th

Perhaps you have never visited our beautiful Parish Church?  
Come in to have a look around, chat, relax, listen to the organ.  
Stay for as long or as little time as you like. Free admission!  
Why not combine it with a visit to the village Museum? (behind the Church) - All Welcome

with  
Steeple Belles  
**STEEPLE ROCKS**  
Cheverell Singers  
Church for 7.30pm

**WE NEED YOU**



**GREAT CHEVERELL  
HARVEST SUPPER**  
Saturday 5th October  
7 pm

The Pavilion  
Great Cheverell  
Welcome Drink & Bar  
3-course Seasonal Menu

Tickets £20.00  
from Pauline 01380 813775  
Jenkinson.pauline@gmail.com  
Proceeds to  
St Peter's Church, Great Cheverell

Our beautiful churchyard at  
All Saints' West Lavington  
**NEEDS SOME TLC!**

Would you be able to join in  
and help us to smarten it up?  
We can provide the tea and cake

If you can help please ring  
Mark Spindlow 01380 813445

Let him know what you can do  
and if you have your own tools  
or just turn up with your trowels,  
weeding tools, secateurs, etc  
All ages welcome!

bear or favourite toy  
enough to attempt the  
**PETER'S CHURCH  
TOY CHALLENGE**

**SUNDAY 27th AUGUST**  
2pm - 5pm

Fun afternoon for all the family  
tea, coffee & cakes

**SAVE THE DATE**

**DO YOU HAVE A BEAR THAT DARES?**



# THE BENEFICE OF



## THE LAVINGTONS Cheverells & Easterton





THE BENEFICE OF



**THE LAVINGTONS**  
Cheverells & Easterton





THE BENEFICE OF



**THE LAVINGTONS**  
Cheverells & Easterton

# Patron Support & Community Facilities



The Benefice is jointly patroned by the Bishop of Salisbury and Christ Church Oxford.

Christ Church Oxford takes a keen interest in the Benefices in which it has a patronage interest. This extends well beyond the appointment process and can take the form of certain grants for the incumbent, a biennial incumbents' conference at Christ Church, and a biennial invitation to parishioners to a service and dinner at Christ Church.

## Community & Facilities

The Benefice villages offer:

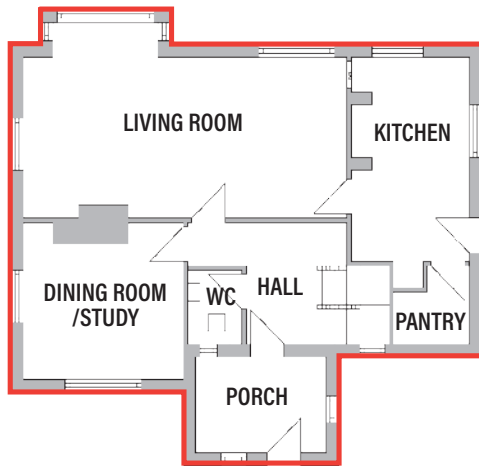
- Welcoming communities with a wide range of clubs and activities.
- Good pre-schools, primary, and secondary schools.
- Through its close community links, Dauntsey's School offers a range of activities, including the Mercers' Lectures and access to its sports facilities.
- Youth club, Scouts, Guides and swimming club.
- Two well-rated NHS surgeries.
- Library and pharmacy.
- Local shops, Post Office and plans for a new Co-op supermarket.
- Cafés and local pubs.
- Golf course nearby.
- Shopping hubs in Bath, Swindon and Salisbury.

# Our Vicarage

THE BENEFICE OF

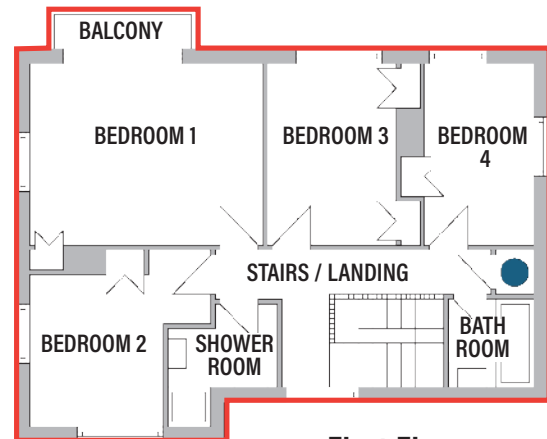
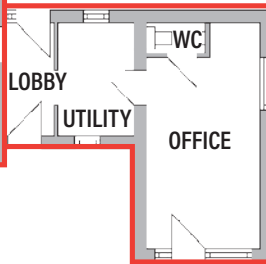


**THE LAVINGTONS**  
Cheverells & Easterton



**Ground Floor**

## The Vicarage Floor Plans



**First Floor**

## The Vicarage/Rectory

The vicarage/Rectory is located on a quiet road in West Lavington, close to All Saints' church and within easy reach of all village amenities and close to the other four Benefice churches.

It is a spacious 4 bedroomed, 2 bathroomed house with stunning views up to Salisbury Plain.

There is a large private garden to the rear and lawned garden at the front with parking space for several cars.

The Diocese has recently completed an upgrade to the kitchen and one of the bathrooms and the whole property has been redecorated and recarpeted.





THE BENEFICE OF



**THE LAVINGTONS**  
Cheverells & Easterton

# Vacancy Prayer



Dear God,  
*your love for us is never changing  
You have welcomed each of us into the family of your Church;  
in Jesus, you call us to be His Body in this place.  
Send down your Holy Spirit upon us at this time of uncertainty and change,  
to fill us with vision, renewed energy and faithfulness in prayer,  
that we may be true to our common Baptism,  
and bring new life to our Benefice and our Parish communities.  
Guide with your heavenly wisdom those appointed to discern and manage the way ahead,  
and help us to find a new Incumbent for this Benefice,  
that we may receive the priest you have prepared for your people:  
Ready to serve with joy, to build us up in faith,  
and lead us by example in loving obedience to your Son,  
our Saviour, Jesus Christ. Amen.*

# Appendix 1

## Person Specification



### The Role

We seek a Christ-centred, servant-hearted leader who will love and spiritually nurture our congregations across all ages and backgrounds. Our Benefice longs to grow in faith and unity (Ephesians 4:12-13) and reach younger generations through evangelism and discipleship. We need a leader who can equip us to use our gifts to build God's church.

### Key Qualities

- A deep personal faith, rooted in prayer.
- A passion for sharing the gospel and seeing lives transformed by it.
- Ability to relate to and engage people of all ages.
- Ability to be a welcoming and visible presence in the community.
- Supportive of paid staff and volunteers.
- Compassionate and discreet in dealing with sensitive issues.
- A leader who motivates with wisdom, patience and kindness.

### Experience

#### *Essential:*

- Leading and inspiring teams.
- Helping others develop and use their gifts.
- Leading a range of worship styles, including all-age worship.
- Encouraging whole-life discipleship.
- Outreach to young people.
- Supporting and developing pastoral care teams.
- Building collaborative relationships.
- Experience in a multi-parish rural Benefice.

### Skills & Knowledge

#### *Essential:*

- Ability to build trusting relationships across all age groups.
- Understanding of the complexities of rural ministry.
- Clear communicator of biblical teaching, applying it to contemporary issues.
- Able to equip and empower others to serve.
- Competent IT skills.
- A full driving licence.

#### *Desirable:*

- An understanding of the role of a Foundation Governor.

### Collaboration & Vision

#### *We need someone who will:*

- Strengthen our links with local schools.
- Support older members of our community.
- Encourage unity and shared vision across the Benefice.
- Help establish a Benefice Council to improve collaboration and administration.
- Work ecumenically with other churches in the area.

This is an exciting opportunity for a dedicated leader to help us grow in faith, outreach and unity, while deepening our impact within the community to make Jesus known.




**THE LAVINGTONS**  
Cheverells & Easterton

**St. Mary's Church, Market Lavington**

ATTRIBUTE	DETAILS
Population	2,045
Congregation Size	15-20 (large congregations at festivals)
Services	Regular and joint services with Trinity Church (URC/Methodist) and St. Barnabas
Community Activities	Friends of St. Mary's, Bell Ringing, Community Hall events, Museum collaborations.

Market Lavington, the largest village in the Benefice, is a Local Service Centre with strong social provisions, including a new Community Hall and a well-established Village Museum. St. Mary's Church is a Grade I listed building, centrally positioned near community facilities. The church shares services with Trinity Church and St. Barnabas, Easterton. A Friends of St. Mary's initiative is expanding engagement, and planned enhancements include a WC and servery. The PCC actively maintains the building and manages grounds improvements.

**All Saints' Church, West Lavington**

ATTRIBUTE	DETAILS
Population	1,333
Congregation Size	22 average attendance; larger for festival services
Services	Holy Communion, Breakfast Church, Praise and Worship, Mattins
Community Activities	Village fete and church Open Day, Ecumenical Home Group, Mothers' Union, Remembrance Service, Carols round the Christmas tree, Bell Ringers, supper after key festive services.

The Parish of West Lavington includes the villages of West Lavington, Littleton Panell, and Joan a Gore. It has a rich history, dating back to the Neolithic period, and remains largely rural with active farms and a vineyard.

The church is a Grade I listed building dating from the 12th century and features a Simon Whistler engraved east window. Recent improvements include a servery, a disabled toilet and under-pew heating. The church is involved in ecological initiatives, holding an Eco Church Bronze Award. Strong community links include regular work with Lavington School and dedicated support for the Village Fete.

**St Peter's Church Great Cheverell**

ATTRIBUTE	DETAILS
Population	595
Congregation Size	21 average attendance, more for festival services.
Services	Holy Communion, Morning Prayer, Welcome to Worship, Breakfast Church
Community Activities	Village Hall events, Pavilion activities, Teddy Bear Zip-wire, Harvest Supper, Flower Festivals, Bell Ringing, concerts, Faith Exploration. The Ecumenical Pastoral Care Team in Gt Cheverell meets weekly to support the church and community, also hosting a monthly gathering for friendship and refreshment.

Great Cheverell is a scenic village with a thriving community life, centred around the Village Hall and Pavilion. St. Peter's Church, a Grade I listed building, dates from the 11th to 15th centuries and has undergone





restoration. The church is a popular wedding venue, and recent renovations have added a kitchen servery and toilet. Lay Worship Leaders play an active role, and the church engages with Holy Trinity Primary Academy, hosting school services. Fundraising events such as concerts and treasure hunts help sustain community connections.

### St. Peter's Church, Little Cheverell

ATTRIBUTE	DETAILS
Population	160
Congregation Size	8 average attendance
Services	Monthly Holy Communion (BCP)
Community Activities	Christmas Eve Crib Service, Annual Coffee Morning, Wiltshire Youth for Christ Partnership, Swift Conservation Project

St Peter's is a grade II listed building situated in a small hamlet. Its two bells are thought to be amongst the oldest in Wiltshire and the bell tower possibly includes Saxon elements.

The church promotes environmental stewardship, recently installing 18 swift nest boxes. The Christmas Eve Crib Service is a highlight, drawing a full congregation. The PCC supports youth engagement through the Wiltshire Youth for Christ Partnership and raises funds via the 200 Club and community events.

### St. Barnabas' Church, Easterton

ATTRIBUTE	DETAILS
Population	580
Congregation Size	About 24 for recent services, more for festivals
Services	Joint services with Trinity Church and Benefice parishes
Community Activities	Agape Supper, Christmas Tree Festival, Toy Service, Harvest Festival, Country Fair participation, School engagement

St. Barnabas' Church, serving Easterton and Eastcott, is a modernized Victorian building with flexible seating for services, meetings and concerts. The village remains largely rural, with a new housing development behind the church.

The church actively supports St. Barnabas CEVC Primary School and aims to reinstate assembly and 'Open the Book' sessions. It plays a significant role in community events, from the Easterton Country Fair to annual celebrations like the Christingle Service and Remembrance Sunday. The PCC works closely with the incumbent rector to support spiritual and pastoral initiatives.



### Romans 8:28

And we know that for those who love God all things work together for good,  
for those who are called according to his purpose.

PARISH	INCOME 2024	EXPENDITURE 2024	SHARE CONTRIBUTION	2025 EXPECTATIONS
Market Lavington	£6K	£18K	£4.5K 39 % of share	Better than 2024. Working hard on church reparations, opening the church through the winter, and paying more Share than in recent years.
West Lavington	£17K	£18.5K	£2K 8 % of share	The PCC is committed to making a higher share payment in 2025.
Great Cheverell	£22K	£17K	£5.2K 60 % of share	Will be paying a partial share payment similar to 2024.
Little Cheverell	8.6K	£9K	£3.5K 50 % of share	Will be paying a similar payment to the 2024 amount.
Easterton	£10K	£6K	£2.5K 27 % of share	Will be paying a similar amount to 2024.
Benefice Total	£63.6K	£68.5K	£17.7K	

### Benefice Finance

The newly recruited Benefice Treasurer has streamlined the systems and meets up regularly with the Churchwardens. Parochial fees for weddings and funerals are received in the Benefice Office and all expenses paid out of this. The costs of the administration and office are split between the parishes and additional funding comes from the Benefice 200 Club which has a monthly draw for ticket holders. Fundraising events are arranged by individual Parishes but supported by all.

Work is currently focussed on a new Parish Giving Scheme to be launched in the coming weeks, and which will draw the Benefice closer together, supporting each other in the payment towards Share and consequently working towards our collective vision to Make Jesus known within the parishes.



# Appendix 4

## Service Patterns



Our Holy Communion services usually use Common Worship, though BCP and other formats are also used. We offer a range of Lay led services including Breakfast Church, Welcome to Worship, Mattins and Evensong.

All the churches celebrate the main festivals and provide a range of other activities to promote links with their communities.

We have good ecumenical links with the other churches in the Benefice, especially the URC/Methodist Church, Trinity United in Market Lavington. We join our ecumenical partners for the World Day of Prayer.

### Pattern of Services During Current Vacancy

PARISH	WEEK 1	WEEK 2	WEEK 3	WEEK 4
All Saints' West Lavington	10:30am Benefice Communion (Clergy led)	9:00am Breakfast Church (Lay led)	10:30am Benefice Communion (Clergy led)  <i>Except</i> 10:00am Welcome to Worship at Gt. Cheverell (Lay led)	9:30am Praise & Worship (Lay led)
St Peter's Great Cheverell		11:00am Holy Communion (PTO led)		11:00am Morning Prayer (Lay led)
St Peter's Little Cheverell				
St Barnabas Easterton		10:30am United Service with URC Church		10:30am United Service with URC Church (URC Minister or Lay led)
St Mary's Market Lavington		URC Minister led		

During the vacancy the type and location(s) of services on 5th Sunday of the month is varied and Lay led.

Morning Prayer is said each week on Thursday at 8am at All Saints', West Lavington.



# Appendix 4

## Service Patterns Cont.

### Pattern of Services Under Previous Incumbent

PARISH	WEEK 1	WEEK 2	WEEK 3	WEEK 4	WEEK 5
All Saints' West Lavington	10:30am Benefice Communion [Clergy led]	9:00am Breakfast Church [Lay led]	9:30am Holy Communion [Clergy led]	9:30am Praise & Worship [Lay led]	10:30am Benefice Communion [Clergy led]
St Peter's Great Cheverell		11:00am Holy Communion [Clergy led]	10:00am Welcome to Worship [Lay Led]	9:30am Praise & Worship [Lay led]	
St Peter's Little Cheverell				Holy Communion [Clergy led]	
St Barnabas Easterton		10:30am United Service with URC Church [URC Minister led]		Holy Communion (URC Minister or Lay led)	
St Mary's Market Lavington			9:30am Holy Communion* [Clergy Led]		

As well as partnering with the local URC/Methodist congregation, we have also valued joint services with our local Catholic and Baptist congregations.



# Appendix 5

## Occasional Offices



PARISH	WEDDINGS			BAPTISMS			FUNERALS		
	2022	2023	2024	2022	2023	2024	2022	2023	2024
Market Lavington	1	1	0	3	4	0	4	1	3
West Lavington	3	0	1	3	2	0	6	6	5
Great Cheverell	0	1	2	0	7	0	0	2	1
Little Cheverell	0	0	0	0	0	0	1	0	2
Easterton	1	0	1	0	1	1	3	2	1
<b>Total</b>	<b>5</b>	<b>2</b>	<b>4</b>	<b>6</b>	<b>14</b>	<b>1</b>	<b>13</b>	<b>11</b>	<b>12</b>



# Appendix 6

## PCC Membership & Meetings

Each church within the Benefice has an Electoral Roll of under 50 members, allowing for a full complement of six PCC members. The churches are supported by dedicated volunteers involved in various aspects of parish life, including cleaning, flower arranging, welcoming, reading, leading intercessions, maintaining the churchyard and fundraising.

### St Mary's, Market Lavington

- Church Warden: 2
- Treasurer: **Appointed**
- Secretary: **Appointed**
- Additional PCC Members: 3
- Meeting Frequency: 5-6 times per year

### All Saints', West Lavington

- Church Wardens: 2
- Treasurer: **Appointed**
- Secretary: **Vacant**
- Additional PCC Members: 4
- Meeting Frequency: 5-6 times per year

### St Peter's, Great Cheverell

- Church Warden: 1
- Treasurer: **Appointed**
- Secretary: **Appointed**
- Additional PCC Members: 4
- Meeting Frequency: 6 times per year

### St Peter's, Little Cheverell

- Church Warden: **Vacant**
- Treasurer: **Appointed**
- Secretary: **Appointed**
- Additional PCC Members: 3
- Meeting Frequency: 4-5 times per year

### St Barnabas, Easterton

- Church Warden: 1
- Treasurer: **Appointed**
- Secretary: **Appointed**
- Additional PCC Members: 2
- Meeting Frequency: 4 times per year

*Each church plays an integral role in the parish, supported by a committed team of volunteers and PCC members who work together to maintain and grow the church community.*



# Appendix 7

## Safeguarding



The Benefice is fully committed to the safeguarding of all children and vulnerable people in our parishes, recognising that the welfare of the child and that of vulnerable adults is paramount. We recognise that safeguarding is everyone's responsibility.

Everyone volunteering with either children's work, vulnerable adults, or in leading worship has a current DBS certificate and the required level of safeguarding training.

We have a Safeguarding Coordinator for the Benefice who ensures that all policies, training and DBS checks are up to date. Individual churches have Dashboard Coordinators who can access their own dashboard but the Coordinator retains overall control.



---

This profile was completed in August 2025; it was written by Sue Allen, Ben Bannister, Nicola Coupe, Anna Spear and Anne Wilson with support and advice from Rev'd Keith Brindle and Rev'd Caroline Spindlow. We are especially grateful to Rev'd Keith for all the time he devoted to this.

The Benefice would like to express deep gratitude to Annemarie Seager who transformed our words and photographs into this beautiful document.

THE BENEFICE OF



**THE LAVINGTONS**  
Cheverells & Easterton

